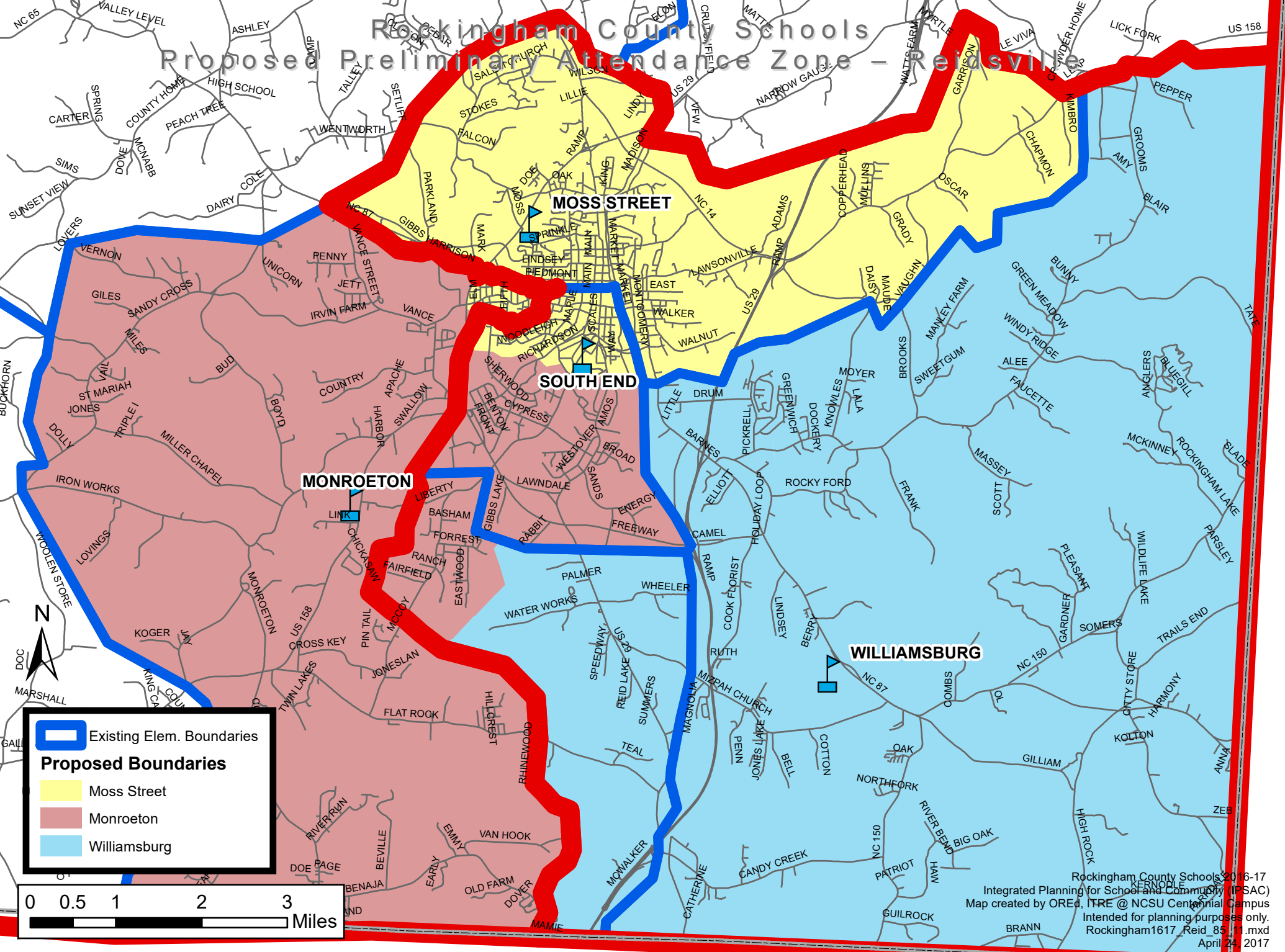


Rockingham County Schools Proposed Preliminary Attendance Zone - Reidsville




MONROETON




SOUTH END

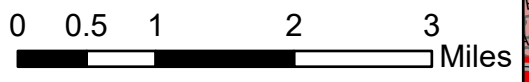
MOSS STREET

WILLIAMSBURG

 Existing Elem. Boundaries

Proposed Boundaries

-  Moss Street
-  Monroeeton
-  Williamsburg



Rockingham County Schools 2016-17
 Integrated Planning for Schools and Community (IPSC)
 Map created by ORED, ITRE @ NCSU Central Campus
 Intended for planning purposes only.
 Rockingham1617_Reid_85_11.mxd
 April 24, 2017