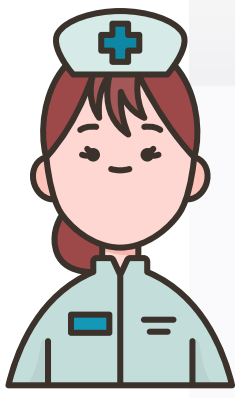
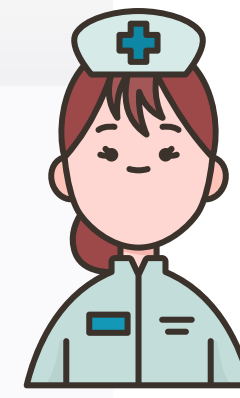


**RCS School Nurses Share:  
Immunization and Health Assessment Requirements**

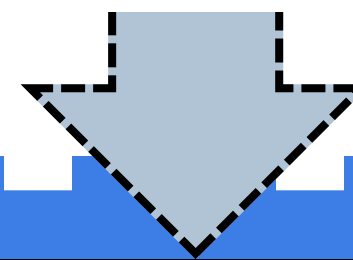
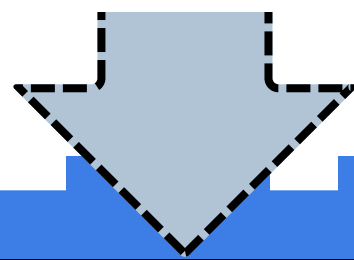


**IMMUNIZATION  
REQUIREMENTS**



**REQUIREMENTS:**

<b>Kindergarten students:</b>	<ul style="list-style-type: none"> <li>• Must submit the completed health assessment (physical exam).                             <ul style="list-style-type: none"> <li>○ The blue NC Health Assessment Transmittal Form (1/2016 rev) must be completed by an authorized medical provider (physician, physician assistant, nurse practitioner). A health assessment (physical exam) completed within one year prior to the first day of school may be accepted.</li> </ul> </li> <li>• Must submit a current and up to date immunization record. Most students entering K will need four (4) immunizations prior to school entry.</li> </ul>
<b>7th grade students:</b>	<ul style="list-style-type: none"> <li>• Must receive the Tdap and meningococcal vaccines and submit the updated immunization record.</li> </ul>
<b>12th grade students:</b>	<ul style="list-style-type: none"> <li>• Must receive the meningococcal vaccine booster dose and submit the updated immunization record.</li> </ul>
<b>First time NC public school students(Grades 1-12):</b>	<ul style="list-style-type: none"> <li>• Must submit the completed health assessment (physical exam).                             <ul style="list-style-type: none"> <li>○ The blue NC Health Assessment Transmittal Form (1/2016 rev) must be completed by an authorized medical provider (physician, physician assistant, nurse practitioner). A health assessment (physical exam) completed within the past one year of enrollment date can be accepted.</li> </ul> </li> <li>• Must submit a current and up to date immunization record.</li> </ul>



**DEADLINES:**

<b>Year-Round calendar students:</b>	<b>August 14, 2024</b>
<b>Early College calendar students:</b>	<b>September 6, 2024</b>
<b>Traditional calendar students:</b>	<b>September 24, 2024</b>
<b>Students enrolled after the first day of school:</b>	<b>No later than 30 calendar days after the first day of enrollment.</b>

*Please make plans for your student to obtain the required immunization by contacting their health care provider, Student Health Center or the Rockingham County Health Department. Also, discuss with your healthcare provider the other recommended adolescent immunizations that may benefit your student. Once completed, please submit the record to school. Failure to submit the requirements by the deadline requires student exclusion until documents are on file, per NC G.S. 130A-155. For questions, please contact your school nurse.*

