

**Discipline Regulation
Reference Guide
2023-2024**



Discipline and Code of Conduct Handbook
Table of Contents by Number in PowerSchool

| Infraction, Page Number(s) | |
|---|--|
| <u>Unacceptable Behavior</u> (Pages 3-37) | 096-UB: Under the influence of controlled substances, Pg. 32 |
| 018-UB: Unlawfully setting a fire, Pg. 5 | 101-UB: Harassment-Racial, Pg. 32 |
| 019-UB: Communicating Threats, Pg. 5 | 102-UB: Harassment-Disability, Pg. 32 & 33 |
| 021-UB: Affray, Pg. 5 | 105-UB: Threat of physical attack with a firearm, Pg. 33 |
| 022-UB: Disorderly Conduct, Pg. 6 | 106-UB: Threat of physical attack with a weapon, Pg. 34 |
| 023-UB: Extortion, Pg. 6 | 107-UB: Threat of physical attack w/o a weapon, Pg. 35 |
| 024-UB: Fighting, Pg. 6 | 109-UB: Harassment- Sexual Orientation, Pg. 35 |
| 025-UB: Harassment- Verbal, Pg. 7 | 110-UB: Harassment-Religious Affiliation, Pg. 36 |
| 026-UB: Hazing, Pg. 8 | 114-UB: Inappropriate Behavior, Pg. 36 |
| 027-UB: Aggressive Behavior, Pg. 8 | 115-UB: Indecent Exposure, Pg. 36 |
| 028-UB: Honor Code Violation, Pg. 9 | 116-UB: Possession of Vaping Device, Pg. 37 |
| 029-UB: False Alarm, Pg. 10 | 117-UB: Use of Vaping Device, Pg. 37 |
| 030-UB: Truancy, Pg. 10 | 121: Continuation of Disciplinary Action from Previous School Yr., Pg. 37 |
| 031-UB: Dress Code Violation, Pg. 11 | |
| 032-UB: Inappropriate language/ disrespect, Pg. 11 | <u>Persistently Dangerous and Reportable Offenses</u> (Pgs. 38-51) |
| 033-UB: Insubordination, Pgs. 12 | 001-PD: Assault resulting in a serious injury, Pg. 38 |
| 034-UB: Gambling, Pg. 13 | 002-RO: Assault involving the use of a weapon, Pg. 38 |
| 035-UB: Falsification of Information, Pg. 13 | 003-RO: Assault on school personnel no serious injury, Pg. 38 & 39 |
| 036-UB: Theft, Pg. 13 | 004-PD: Homicide, Pg. 39 |
| 037-UB: Bus Misbehavior, Pgs. 14, 55-56 | 005-RO: Possession of controlled substance - cocaine Pg. 40 |
| 038-UB: Harassment-sexual, Pg. 14 | 00-RO: Possession of controlled substance – marijuana , Pg. 40 |
| 039-UB: Property Damage, Pg. 15 | 007-RO: Possession of controlled substance - Ritalin, Pg. 40 |
| 040-UB: Inappropriate items on school property, Pg. 15 | 008-RO: Possession of a weapon (no firearm, explosive), Pg. 41 |
| 041-UB: Possession of tobacco, Pg. 16 | 009-RO: Possession firearm or powerful explosive, Pg. 41 |
| 042-UB: Disruptive Behavior, Pgs. 16 & 17 | 010-PD: Robbery w/dangerous weapon, Pg. 42 |
| 044-UB: Assault on student, Pg. 18 | 012-PD: Rape, Pg. 42 |
| 045-UB: Assault- other, Pg. 18 | 013-PD: Sexual Offense, Pgs. 43 |
| 046-UB: Possession of counterfeit items, Pg. 18 | 014-PD: Sexual assault not involving rape or sexual offense, Pg. 44 |
| 047-UB: Use of counterfeit items, Pg. 18 | 015-PD: Taking indecent liberties with a minor, Pg. 44 |
| 051-UB: Possession of a chemical or drug paraphernalia Pg. 18 | 016-PD: Kidnapping, Pg. 45 |
| 052-UB: Bullying, Pg. 19 | 017-RO Possession of controlled substance– (other) Pg. 45 |
| 058-UB: Other School Defined Offense, Pg. 20 | 018-UB: Unlawfully setting a fire, Pg. 45 |
| 059-UB: Being in unauthorized area, Pg. 20 | 019-UB: Communicating Threats, Pg. 46 |
| 060-UB: Cell phone use, Pg. 20 | 020-RO: Alcohol Possession, Pg. 46 |
| 061-UB: Disrespect of Faculty/Staff, Pg. 20 | 043-RO: Making Bomb Threats or Engaging in Bomb Hoaxes, Pg. 46 |
| 063-UB: Excessive Display of Affection, Pg. 21 | 048: Use of Alcoholic Beverage, Pg. 47 |
| 064-UB: Excessive Tardiness, Pg. 21 | 049: Use of Controlled Substance, Pg. 47 |
| 065-UB: No immunization, Pg. 22 | 050-RO: Use of Narcotics, Pg. 47 |
| 068-UB: Mutual sexual contact between two students, Pg. 22 | 053-Burning of a School Building, Pg. 47 |
| 070-UB: Use of Tobacco, Pg. 22 | 054-RO: Sale controlled substance, cocaine, Pg. 47 |
| 071-UB: Assault on non -student w/o weapon & no injury, Pg. 23 | 055-RO: Sale controlled substance, marijuana, Pg. 48 |
| 072-UB: Assault on a student w/o weapon & no serious injury, Pg. 23 | 056-RO: Sale controlled, Ritalin, Pg. 48 |
| 074-UB: Cutting Class, Pg. 23 | 057-RO: Sale of controlled substance (other) Pg. 48 |
| 075-UB: Skipping School, Pg. 24 | 087-RO: Possession of others' prescription drugs, Pg. 48 |
| 077-UB: Physical Exam, Pg. 24 | 088-RO: Distribution of Prescription Drug, Pg. 49 |
| 078-UB: Late to class, Pg. 25 | 103-RO: Robbery w/firearm or explosive device, Pg. 49 |
| 079-UB: Gang activity, Pgs. 26 & 27 | 104-RO: Physical attack w/firearm or explosive device, Pg. 49 |
| 080-UB: Discrimination, Pgs. 27 & 28 | 118-RO: Possess of controlled substance in violation of law-opioid, Pg. 50 |
| 086-UB: Possession of student's own prescription drug, Pg. 28 | 119-RO: Sale of controlled substance in violation of law-opioid, Pg. 50 |
| 090-UB: Violent assault not resulting in serious injury, Pg. 28 | 122-PD: Sexual Activity/Pretext Medical Treatment, Pg. 51 |
| 091-UB: Misuse of school technology, Pg. 28 | |
| 092-UB: Repeat Offender, Pg. 29 | <u>Additional Guidance</u> (Pgs. 52-60) |
| 093-UB: Robbery without a weapon, Pg. 29 | Office Referral Flow Chart, Pg. 52 |
| 094-UB: Cyber-bullying, Pg. 29-31 | Early Childhood Considerations, Pgs. 53 & 54 |
| 095-UB: Under the influence of alcohol, Pg. 32 | Bus Expectations and Consequences, Pgs. 55 & 56 |
| | Discipline Related PowerSchool Codes Pgs. 57-60 |

Discipline and Code of Conduct Handbook
Table of Contents by Number in Alphabetical Order

| Infraction, Page Number | |
|--|---|
| <u>Unacceptable Behavior</u> (Pgs. 3-37) | 036-UB: Theft, Pg. 13 |
| 027-UB: Aggressive Behavior, Pg. 8 | 105-UB: Threat of physical attack with a firearm, Pg. 33 |
| 021-UB: Affray, Pg. 5 | 106-UB: Threat of physical attack with a weapon, Pg. 34 |
| 044-UB: Assault on student, Pg. 18 | 107-UB: Threat of physical attack w/o a weapon, Pg. 35 |
| 045-UB: Assault- other, Pg. 18 | 095-UB: Under the influence of alcohol, Pg. 32 |
| 072-UB: Assault on a student w/o weapon & no serious injury, Pg. 23 | 096-UB: Under the influence of controlled substances, Pg. 32 |
| 059-UB: Being in unauthorized area, Pg. 20 | 018-UB: Unlawfully setting a fire, Pg. 5 |
| 052-UB: Bullying, Pg. 19 | 047-UB: Use of counterfeit items, Pg. 18 |
| 037-UB: Bus Misbehavior, Pgs. 14, 55 & 56 | 070-UB: Use of Tobacco, Pg. 22 |
| 060-UB: Cell phone use, Pg. 20 | 117-UB: Use of Vaping Device, Pg. 37 |
| 019-UB: Communicating Threats, Pg. 5 | 090-UB: Violent assault not resulting in serious injury, Pg. 28 |
| 121: Continuation of Disciplinary Action from Previous School Yr, Pg. 37 | |
| 074-UB: Cutting Class, Pg. 23 | <u>Persistently Dangerous and Reportable Offenses</u> (Pgs. 38-51) |
| 094-UB: Cyber-bullying, Pgs. 29-31 | 020-RO: Alcohol Possession, Pg. 46 |
| 031-UB: Dress Code Violation, Pg. 11 | 002-RO: Assault involving the use of a weapon, Pg. 38 |
| 080-UB: Discrimination, Pgs. 27 & 28 | 003-RO: Assault - school personnel w/no serious injury, Pgs. 38 & 39 |
| 022-UB: Disorderly Conduct, Pg. 6 | 001-PD: Assault resulting in a serious injury, Pg. 38 |
| 061-UB: Disrespect of Faculty/Staff, Pg. 20 | 053-Burning of a School Building, Pg. 47 |
| 042-UB: Disruptive Behavior, Pgs. 16 & 17 | 019-UB: Communicating Threats, Pg. 46 |
| 063-UB: Excessive Display of Affection, Pg. 21 | 088: RO: Distribution of Prescription Drugs, Pg. 49 |
| 064-UB: Excessive Tardiness, Pg. 21 | 004-PD: Homicide, Pg. 39 |
| 023-UB: Extortion, Pg. 6 | 016-PD: Kidnapping, Pg. 45 |
| 029-UB: False Alarm, Pg. 10 | 043-RO: Making Bomb Threats or Engaging in Bomb Hoaxes, Pg. 46 |
| 035-UB: Falsification of Information, Pg. 13 | 104-RO – Physical attack w/firearm or explosive device, Pg. 49 |
| 024-UB: Fighting, Pg. 6 | 017-RO Possession of controlled substance– (other) Pg. 45 |
| 034-UB: Gambling, Pg. 13 | 005-RO: Possession of controlled substance - cocaine, Pg. 40 |
| 079-UB: Gang activity, Pgs. 26 & 27 | 00-RO: Possession of controlled substance - marijuana, Pg. 40 |
| 102-UB: Harassment-Disability, Pgs. 32 & 33 | 007-RO: Possession of controlled substance - Ritalin, Pg. 40 |
| 025-UB: Harassment- Verbal, Pg. 7 | 009-RO: Possession of firearm or powerful explosive, Pg. 41 |
| 101-UB: Harassment-Racial, Pg. 32 | 008-RO: Possession of a weapon (excluding firearm, explosive), Pg. 41 |
| 110-UB: Harassment-Religious Affiliation, Pg. 36 | 087-RO: Possession of others' prescription drugs, Pg. 48 |
| 038-UB: Harassment-sexual, Pg. 14 | 012-RO: Rape, Pg. 42 |
| 109-UB: Harassment- Sexual Orientation, Pg. 35 | 010-PD: Robbery w/dangerous weapon, Pg. 42 |
| 026-UB: Hazing, Pg. 8 | 103-RO: Robbery w/firearm or explosive device, Pg. 49 |
| 028-UB: Honor Code Violation, Pg. 9 | 054-RO: Sale controlled substance, cocaine, Pg. 47 |
| 114-UB: Inappropriate Behavior, Pg. 36 | 055-RO: Sale controlled substance, marijuana, Pg. 48 |
| 032-UB: Inappropriate language/ disrespect, Pg. 11 | 056-RO: Sale of controlled substance, Ritalin, Pg. 48 |
| 040-UB: Inappropriate items on school property, Pg. 15 | 057-RO: Sale of controlled substance, other, Pg. 48 |
| 115-UB: Indecent Exposure, Pg. 36 | 014-PD: Sexual assault not involving rape or sexual offense, Pg. 44 |
| 033-UB: Insubordination, Pg. 12 | 013-PD: Sexual Offense, Pg. 43 |
| 078-UB: Late to class, Pg. 25 | 015-PD: Taking indecent liberties with a minor, Pg. 44 |
| 091-UB: Misuse of school technology, Pg. 28 | 018-UB: Unlawfully setting a fire, Pg. 45 |
| 068-UB: Mutual sexual contact between two students, Pg. 22 | 048-RO: Use of Alcoholic Beverage, Pg. 47 |
| 065-UB: No Immunization, Pg. 22 | 049-RO: Use of Controlled Substance. Pg. 47 |
| 058-UB: Other School Defined Offense, Pg. 20 | 050-RO: Use of Narcotics, Pg. 47 |
| 077-UB: Physical Exam, Pg. 24 | 118-RO: Possession of controlled substance in violation of law-opioid, Pg. 50 |
| 046-UB: Possession of counterfeit items, Pg. 18 | 119-RO: Sale of controlled substance in violation of law-opioid, Pg. 50 |
| 086-UB: Possession of student's own prescription drug, Pg. 28 | 122-PD: Sexual Activity/Pretext Medical Treatment, Pg. 51 |
| 041-UB: Possession of tobacco, Pg. 16 | |
| 116-UB: Possession of Vaping Device, Pg. 37 | <u>Additional Guidance</u> (Pgs. 52-60) |
| 039-UB: Property Damage, Pg. 15 | Office Referral Flow Chart, Pg. 52 |
| 093-UB: Robbery without a weapon, Pg. 29 | Early Childhood Considerations, Pgs. 53 & 54 |
| 075-UB: Skipping School, Pg. 24 | Bus Expectations and Consequences, Pgs. 55 & 56 |
| 030-UB: Truancy, Pg. 10 | Discipline Related PowerSchool Codes Pgs. 57-60 |



Code of Conduct and Consequences for Behavior Offenses

Rockingham County Schools is committed to maintaining safe and orderly schools in order to enhance educational opportunities for all students and to maintain schools as a safe haven. This Code of Conduct describes conduct expectations and consequences for violations of those expectations. The primary intent of any disciplinary action is to bring about a positive change in student behavior.

The provisions of this Code are guided by the principles and standards found in Board Policy 4300. For additional information, students and parents should consult Board policy and related administrative regulations. These documents are available on the Rockingham County Schools website. The following policies and procedures may be particularly useful to parents and students:

- Policy 4300: Student Behavior Policies and Code of Conduct
- Regulation 4300-R-1: Discipline Regulation Guide
- Regulation 4300-R-2: Student Dress Code
- Policy 4345: Student Discipline Records
- Policy 4351: Short-Term Suspension
- Policy 4353: Long-Term Suspension, 365-Day Suspension, Expulsion

As stated in Policy 4300, this Code applies to any student who is on school property (including school transportation), who is in attendance at school or at any school-sponsored activity, or whose conduct at any time, on or off campus, has or is reasonably expected to have a direct and immediate impact on the orderly and efficient operation of the schools or the safety of individuals in the school environment.

The chart that follows defines the specific conduct prohibited by this Code and provides recommended interventions and consequences for such conduct. Administrators have the authority to adjust consequences from the recommended ranges in the following charts based on individual circumstances, including aggravating and mitigating factors in order to maintain safety. In addition, identified students with special needs may have different sanctions or actions based on their Individualized Education Plan (IEP) and/or based on special education or disability law. The Code of Conduct provides specific infractions and a recommended consequence for each infraction. If you have specific questions or would like copies of Board discipline policies or administrative regulations, please contact school administration.

Minor Behaviors: Discipline incidents that can be handled by the classroom teacher and usually do not warrant a discipline referral to the office.

Major Behaviors: Discipline incidents that may be handled by the administration. Major behaviors may also include chronic or repetitive minor behaviors.

Certain violations may be either minor or major depending on the specific circumstances (for example, “Aggressive Behavior” may be a major or minor violation). Some violations are automatically considered major violations (for example, “Bullying” is always a major violation). Factors that may impact whether a violation is considered major or minor, and what the appropriate consequence may be, are called aggravating and mitigating factors.

Aggravating factors are relevant facts that tend to increase the seriousness of the violation or the student’s culpability. They include, but are not limited to,

- a. Inducing others to take part in the prohibited behavior or occupying a position of leadership or dominance of other participants;
- b. Attempting to flee or conceal guilt;
- c. Falsely blaming another individual;
- d. Receiving money or something of value from the misbehavior;
- e. A pattern or history of disciplinary infractions;
- f. Victimizing a significantly younger or smaller student or a student with a known or obvious mental or physical disability;
- g. Taking advantage of a position of trust or confidence to commit the offense.

Mitigating factors are relevant facts that tend to decrease the serious of the violation or the student’s culpability. They include, but are not limited to:

- a. The student's age/maturity and developmental level;
- b. No recent disciplinary history;
- c. Being a passive participant or playing a minor role in the offense;
- d. Making appropriate restitution;
- e. Acting under strong provocation;
- f. Aiding in the investigation.

As part of an MTSS problem solving process, school teams regularly review behavioral data to determine patterns of behavior. When patterns of behavior are identified with groups of students or with individual students, school teams can address these through the problem solving process to determine appropriate intervention and supports.

The following abbreviations are used throughout the chart:

OSS- Out of School Suspension **ISS**- In School Suspension **LTS**- Long Term Suspension **Off-Offense** **PC**- Parent Conference

UB – Unacceptable Behavior **RO** – Reportable Offenses **PD** – Persistently Dangerous

***Reportable offense on Annual School Violence Report

Note: LTS for high school is usually for the remainder of the semester but may continue to the end of the first semester of the next school year in certain circumstances. If Law Enforcement is involved, the officer has the discretion to offer Teen Court.

| Behavior Offense | Definition/Examples (Examples may not be inclusive of all possibilities.) | Classroom Consequences for Minor Instances (These are possible consequences identified and used by teacher discretion.) (Choose one or more of the following options.) | School-Wide Consequences for Major Instances (Office administered consequences by an administrator) |
|--|--|---|--|
| 018 UB: Unlawfully setting a fire (G.S. 14-277.1) | <p><u>Major:</u> Student plans and/or participates in malicious burning of property.</p> <p>The student is found to have or to have participated in starting a fire or attempting to start a fire on school property or on school sponsored trips without proper authorization.</p> | | 10 days suspension, Police Involvement, possible LTS and/or Alternative School Placement |
| <p>019 UB: Communicating threats (G.S. 14-277.1)</p> <p>See Board Policy 4331.</p> <p>See Board Policy 4333.</p> | <p><u>Major:</u> Student makes a threat to harm another person. (Example: Making statements such as, “I am going to kill you.” or making a statement of harming someone with a plan that could cause harm.)</p> <p>A person who communicates threats is defined as:</p> <p>(G.S. §14-277.1): A person who (1) willfully threatens to physically injure the person or that person's child, sibling, spouse, or dependent or willfully threatens to damage the property of another; (2) the threat is communicated to the other person, orally, in writing, or by any other means; (3) the threat is made in a manner and under circumstances which would cause a reasonable person to believe that the threat is likely to be carried out; and (4) the person threatened believes that the threat will be carried out. See Reporting Communicating Threats, Threat of an Assault (Physical Attack) with a Weapon, Threat of an Assault (Physical Attack) with a Firearm, and Threat of as Assault (Physical Attack) without a weapon for more detail.</p> | <p>Staff refers student to Instructional Support Staff and Reports information to Administrator</p> <p>Consultation with the BETA Team (Behavioral Emotional Therapeutic Assistance Team)</p> | Risk Assessment, 0-10 days OSS, Police Involvement, Possible LTS |
| 021 UB: Affray (G.S. 14-33) | <p><u>Major:</u> Affray consists of the fighting of two or more persons in a public place (this may include unlawful assembly or riot).</p> | | <p><i>1st Offense:</i> Up to 5 days of OSS, Possible Police Involvement</p> <p><i>2nd Offense:</i> Up to 10 days of OSS, Police Involvement, Possible Alternative School Placement (Middle/High)</p> |

| Behavior Offense | Definition/Examples (Examples may not be inclusive of all possibilities.) | Classroom Consequences for Minor Instances (These are possible consequences identified and used by teacher discretion.) (Choose one or more of the following options.) | School-Wide Consequences for Major Instances (Office administered consequences by an administrator) |
|---|---|--|---|
| 022 UB: Disorderly conduct (G.S. 14-288.4(a)(6)) | <p>Major: A person who recklessly, knowingly, or intentionally:</p> <ul style="list-style-type: none"> ● engages in fighting or in tumultuous conduct; ● engages in social media challenge (i.e. Tik Tok Challenge) that causes significant disruption to school operations; ● makes unreasonable noise (noise that causes instruction to cease) and continues to do so after being asked to stop; or ● disrupts a lawful assembly of persons. <p>Disorderly conduct refers is defined as when a person “disrupts, disturbs or interferes with teaching of students at any public or private educational institution or engages in conduct which disturbs the peace, order, or discipline at any education institution or on the grounds adjacent thereto” or when a person “engages in conduct which disturbs the peace, order, or discipline on any public school bus or public school activity bus.</p> | | Up to 10 days of OSS, Police Involvement |
| 023 UB: Extortion See Board Policy 4330. | <p>Major: Extortion involves obtaining money, property, services, or anything of value from a person, entity, or institution, through coercion or intimidation. The actual obtainment of money or property is not required to commit the offense and may include making a threat of violence through verbal, written, or physical threats, coercion, intimidation, or act which refers to a requirement of a payment of money or property to halt future violence is sufficient to commit the offense. It may involve the infliction of something such as pain and suffering or making somebody endure something unpleasant to obtain the money or property</p> | | <p><i>1st Offense:</i> Up to 3 days OSS, Restitution, Police Involvement <i>2nd Offense:</i> Up to 5 days OSS, Restitution, Police Involvement <i>3rd Offense:</i> 6-10 days OSS, Restitution, Police Involvement</p> |
| 024 UB: Fighting | <p>Major: Fighting can occur when two individuals willfully engage in major physical contact that may or may not result in injury, including, but not limited to hitting, slapping, punching, kicking with the intent to harm.</p> | | <p><i>1st Offense:</i> 1 to 3 days OSS, <i>2nd Offense:</i> Up to 5 days OSS, <i>3rd Offense:</i> Up to 10 days OSS</p> <p>* Possible Police Involvement (Grades 6-12), Possible Alternative School Referral (Grades 6-12)</p> |

| Behavior Offense | Definition/Examples (Examples may not be inclusive of all possibilities.) | Classroom Consequences for Minor Instances (These are possible consequences identified and used by teacher discretion.) (Choose one or more of the following options.) | School-Wide Consequences for Major Instances (Office administered consequences by an administrator) |
|--|--|--|---|
| 025 UB: Harassment - verbal See Board Policy 1710/4020/723 Q. | <p>Major: Any pattern of verbal communications that takes place on school property, at any school-sponsored function, or on a school bus that:</p> <ul style="list-style-type: none"> delivers disrespectful messages (verbal or gesture) to another person that includes threats and intimidation, obscene gestures, pictures, or written notes. places a student or school employee in actual and reasonable fear of harm to his or her person or damage to his or her property; or creates or is certain to create a hostile environment by substantially interfering with or impairing a student’s educational performance, opportunities, or benefits. For purposes of this section “hostile environment” means that the victim subjectively views the conduct as bullying or harassing behavior and the conduct is objectively severe or pervasive enough that a reasonable person would agree that it is bullying or harassing behavior. Bullying or harassing behavior includes, but is not limited to, acts reasonably perceived as being motivated by any actual or perceived differentiating characteristic, such as race, color, religion, ancestry, national origin, gender, socioeconomic status, academic status, gender identity, physical appearance, sexual orientation, or mental, physical, developmental, or sensory disability, or by association with a person who has or is perceived to have one or more of these characteristics. | | <p>Elementary: <i>1st Offense:</i> In School Consequences up to 1 days of OSS <i>2nd Offense:</i> In School Consequences up to 2 days of OSS <i>3rd offense:</i> Up to 3 days of OSS</p> <p>Secondary (Middle and High School): <i>1st Offense:</i> In school consequence up to 3 days of OSS <i>2nd Offense:</i> Up to 5 days of OSS <i>3rd Offense:</i> Up to 10 days of OSS</p> |
| Behavior Offense | Definition/Examples | Classroom Consequences for Minor Instances | School-Wide Consequences for Major Instances |

| | (Examples may not be inclusive of all possibilities.) | (These are possible consequences identified and used by teacher discretion.) (Choose one or more of the following options.) | (Office administered consequences by an administrator) |
|---|---|--|---|
| 026: Hazing See Board Policy 3620. | <p>Major: Hazing is any action or situation, with or without the consent of the participants, which recklessly, intentionally, or unintentionally endangers the mental, physical, or academic health or safety of a student. This includes, but is not limited to any situation which: creates a risk of injury to any individual or group, causes discomfort to any individual or group, causes embarrassment to any individual or group, involves harassment of any individual or group, involves degradation of any individual or group, involves humiliation of an individual or group, involves ridicule of an individual or group.</p> <p>Involves or includes the willful destruction or removal of public or private property for the purpose of initiation or admission into, affiliation with, or as a condition for continued membership in an organization. It includes physical injury, assault or battery, kidnapping or imprisonment, intentionally placing at risk of mental or emotional harm (putting “over the edge”), degradation, humiliation, the compromising of moral or religious values, forced consumption of any liquid or solid, placing an individual in physical danger (at risk) which includes abandonment, and impairment of physical liberties which include curfews or other interference with academic endeavors.</p> | | <p>Elementary: <i>1st Offense:</i> In School Consequences up to 1 days of OSS <i>2nd Offense:</i> In School Consequences up to 2 days of OSS <i>3rd offense:</i> Up to 3 days of OSS</p> <p>Secondary (Middle and High School): <i>1st Offense:</i> In school consequence up to 3 days of OSS <i>2nd Offense:</i> Up to 5 days of OSS <i>3rd Offense:</i> Up to 10 days of OSS</p> |
| 027 UB: Aggressive behavior | <p>Minor: Student engages in non-serious, but inappropriate physical contact (ex. flicking, grabbing, pushing, all with no injury)</p> <p>Major: Physical aggression can occur between two individuals or be a one-sided incident in which students are engaging in minor physical contact, not resulting in an injury, with at least one person demonstrating anger, and includes, but is not limited to behaviors such as grabbing, punching, shoving, kicking, or throwing objects.</p> | <p>Teacher Conference with Student; Seat Change; Loss of privileges; Parent/Guardian Contact; Conference with Parent; Administrative Conference</p> <p>Team Teacher Supervision-supervised time outside of class in team classroom</p> <p>School Counselor/Guidance Referral</p> <p>For elementary: Supervised playground activity</p> <p>Referral to MTSS Team Consider FBA/BIP through MTSS Team</p> | <p>Elementary: <i>1st Offense:</i> In school consequence <i>2nd Offense:</i> In school consequence up to 2 days OSS <i>3rd Offense:</i> UP to 3 days of OSS</p> <p>Secondary (Middle and High School): <i>1st Offense:</i> In school consequence up to 3 days of OSS <i>2nd Offense:</i> Up to 5 days of OSS <i>3rd Offense:</i> Up to 10 days of OSS</p> |

| Behavior Offense | Definition/Examples (Examples may not be inclusive of all possibilities.) | Classroom Consequences for Minor Instances (These are possible consequences identified and used by teacher discretion.) (Choose one or more of the following options.) | School-Wide Consequences for Major Instances (Office administered consequences by an administrator) |
|---|--|--|---|
| <p>028 UB: Honor code violation</p> <p>(continued to next page)</p> <p>See Board Policy 4310.</p> | <p>Major:</p> <p>Plagiarism: Portrayal of another’s work or ideas as one’s own.</p> <ul style="list-style-type: none"> ● Buying a paper off the internet and turning it in as if it were your own work ● Improperly citing references on a works cited page or within the text of a paper <p>Cheating: Using unauthorized notes or study aides, allowing another party to do one’s work/exam as one’s own, or submitting the same or similar work in more than one course without permission from the course instructors.</p> <ul style="list-style-type: none"> ● Taking an exam for another person ● Looking off another person’s exam for answers ● Bringing and using unauthorized notes during an exam <p>Fabrication: Falsification or creation of data, research, or resources; or altering a graded work without the prior consent of the course instructor.</p> <ul style="list-style-type: none"> ● Making up a reference for a works cited page ● Making up statistics or facts for academic work <p>Aid of Academic Dishonesty: Intentionally facilitating plagiarism, cheating, or fabrication.</p> <ul style="list-style-type: none"> ● Helping another person do a take home exam ● Giving answers to an exam ● Collaborating with others on work that is supposed to be completed independently <p>Lying: Deliberate falsification with the intent to deceive in written or in verbal form as it applies to an academic submission.</p> <p>Bribery: Providing, offering, or taking rewards in exchange for a grade, an assignment, or the aid of academic dishonesty.</p> <ul style="list-style-type: none"> ● Paying a student to do work on your behalf ● Attempting to pay a teacher to change a grade <p>Threat: An attempt to intimidate a student, staff, or faculty member for the purpose of receiving an unearned grade or in an effort to prevent the reporting of an Honor Code violation.</p> <p>Resubmission: Completing original work for one class and then resubmitting the work, in full or in part, to another class without permission from both instructors and/or without proper citation.</p> | | <p><i>1st Offense:</i> “ No Credit” for assignment; In school consequence up 3 days of ISS</p> <p><i>2nd Offense:</i> “No Credit” for assignment; Up to 3 days of OSS</p> <p>*Standardized assessment scores (EOG, EOC) would cause for more severe consequence of 0-10 days OSS, Possible LTS)</p> |

| Behavior Offense | Definition/Examples (Examples may not be inclusive of all possibilities.) | Classroom Consequences for Minor Instances (These are possible consequences identified and used by teacher discretion.) (Choose one or more of the following options.) | School-Wide Consequences for Major Instances (Office administered consequences by an administrator) |
|--|---|--|--|
| 029 UB: False fire alarm See Board Policy 3620. See Board Policy 4315. | <p><u>Major:</u> An emergency alarm, such as a fire alarm, that is set off unnecessarily. It may also include a signal or warning that is groundless.</p> | | Up to 10 days of OSS, Police Involvement, Possible LTS and/or Alternative Placement (for middle/high school) |
| 030 UB: Truancy See Board Policy 4400. | <p><u>Major:</u> Truancy is any intentional unauthorized or illegal absence from compulsory education. It is absences caused by students of their own free will, and does not refer to legitimate "excused" absences, such as ones related to medical conditions or religious observance.</p> | Schools encourage students by creating incentives to promote attendance and promptness to class. Contact your child's school for attendance incentives. | <p><u>Elementary</u> <i>Require parents to come in school an sign in student upon arrival.</i></p> <p><i>15 and beyond (tardies, skipping, late to class, etc):</i> Parent interventions agreed upon by principal and school social worker; disciplinary actions may be assigned by administration.</p> <p><u>Secondary (Middle/High)</u> <i>Consequences start over at the beginning of each nine weeks.</i></p> <p><i>15 and beyond (tardies, skipping, late to class, etc):</i> 3 days of OSS</p> <p>Excessive tardiness may result in loss of school privileges to include, but not limited to, the following: driving privileges on campus, attendance at athletic and extracurricular events, club participation, exam exemptions, lunch detention, and after school detention, and prom.</p> <p><u>All Levels:</u> Failure to comply with imposed consequences is a violation of Board policy and may result in addition consequences, including loss of privileges and OSS.</p> |

| Behavior Offense | Definition/Examples (Examples may not be inclusive of all possibilities.) | Classroom Consequences for Minor Instances (These are possible consequences identified and used by teacher discretion.) (Choose one or more of the following options.) | School-Wide Consequences for Major Instances (Office administered consequences by an administrator) |
|---|---|--|--|
| <p>031 UB: Dress code violation</p> <p>See Board Policy 4300-R-2.</p> <p>See Board Policy 4316.</p> | <p>Minor: Student wears clothing that is not within the dress code guidelines defined by the school/district.</p> <p>Major: 4th offense of student wearing clothing that is not within the dress code guidelines defined by the school/district.</p> <p>Dress code violation is defined as appearance or clothing which is disruptive, provocative, indecent, vulgar, obscene, or which advertises illegal drugs or displays obnoxious or indecent signs, symbols or drawings, or which endangers the health or safety of the student or others is prohibited by the Rockingham County Schools Board of Education. Articles of clothing, which are offensive to race, creed, color, or sex will not be permitted.</p> | <p>Teacher Conference with Student</p> <p>Loss of privileges</p> <p>Parent/Guardian Contact</p> <p>Conference with Parent</p> <p>School Counselor Referral</p> <p>Administrative Conference</p> <p>Dress Code Check each morning by Principal during announcements</p> | <p>Elementary: In school consequence, Guidance Intervention, Parent Contact</p> <p>Middle/High School <i>1st Offense:</i> Warning, Parent Contact <i>2nd Offense:</i> Up to 1 day of ISS <i>3rd Offense:</i> Up to 2 days of ISS, Parent Conference</p> |
| <p>032 UB: Inappropriate language/disrespect</p> | <p>Minor: Student engages in low intensity instance of inappropriate language not necessarily directed at another person (student using inappropriate language in conversation)</p> <p>Major: Verbal messages that include profanity, name calling or use of words in an inappropriate way directed to someone, or about someone, that demonstrate disrespect toward another person.</p> <p>Inappropriate language is defined as vulgar or abusive spoken language or written language, such as profanity. It does not necessarily have to be directed at a person to be considered as such.</p> <ul style="list-style-type: none"> ● Profanity: Saying anything that conveys an offensive, racial, obscene, or sexually suggestive message. ● Obscene/Offensive Gestures: Making any sign that conveys an offensive, racial, obscene, or sexually suggestive message. ● Derogatory Written Materials: Having any written material or pictures that convey an offensive, racial, obscene, or sexually suggestive message. ● Directed at Staff Member: Writing, saying, or making gestures that convey an offensive, racial, obscene, or sexually suggestive message toward a staff member. <p>Disrespect toward others is defined as inappropriate comments or physical gestures directed toward other persons (see above definitions).</p> | <p>Teacher Conference with Student</p> <p>Seat Change</p> <p>Loss of privileges</p> <p>Parent/Guardian Contact</p> <p>Conference with Parent</p> <p>Referral to School Counselor</p> | <p>Elementary: <i>1st Offense:</i> In school consequence up to 1 days OSS <i>2nd Offense:</i> In school consequence up to 2 days OSS <i>3rd Offense:</i> UP to 3 days of OSS</p> <p>Secondary (Middle and High School): <i>1st Offense:</i> In school consequence up to 3 days of OSS <i>2nd Offense:</i> Up to 5 days of OSS <i>3rd Offense:</i> Up to 10 days of OSS</p> |

| Behavior Offense | Definition/Examples (Examples may not be inclusive of all possibilities.) | Classroom Consequences for Minor Instances (These are possible consequences identified and used by teacher discretion.) (Choose one or more of the following options.) | School-Wide Consequences for Major Instances (Office administered consequences by an administrator) |
|--|--|---|---|
| 033 UB: Insubordination (Other Terminology-Defiance) | <p><u>Minor:</u> Refusing to follow directions by talking back or verbally arguing with a staff member or engaging in passive non-compliance (ignoring) for a specific behavior(talking back, not following directions, ignoring a staff member direction)</p> <p><u>Major:</u> Repetition (3 or more) of minor defiance, or defiant behavior that severely disrupts the learning environment and/or poses a safety issue</p> <p>Insubordination is defined as refusing to follow a reasonable request to a specific direction/instruction of an adult through disobedience, defiance, unruliness, or noncompliance. This can include, but is not limited to, walking away when an adult is speaking to you, talking back to an adult, refusal to work in class, refusal to report to the office, refusal to allow a search. (Policy code #4342)</p> <p>A student will obey the lawful direction of any authorized staff member during the time the student is in school, participating in a school activity, or on school property.</p> <ul style="list-style-type: none"> ● Failure to comply with proper and authorized direction or instruction of a staff member: Failure to follow any authorized direction given by a staff member. ● Refusal to work in class: Failing to do assigned work during class. ● Refusal to participate in detention In-School Alternatives: Failure to report to in-school alternatives as directed by a staff member. ● Refusal to report to office: Failure to report to the administrative office as directed by a staff member. ● Walk Away: Leaving while a staff member is talking to you. ● Talking Back: Responding in an argumentative manner to a staff member. | <p>If a student is noncompliant and demonstrates loud verbal or nonverbal behaviors that interrupt instruction, staff members redirect, restate the expectations, and give students time to comply.</p> <p>Referral to Instructional Support Staff</p> <p>Teacher Conference with Student</p> <p>Seat Change</p> <p>Loss of privileges</p> <p>Parent/Guardian Contact</p> <p>Conference with Parent</p> <p>Team Teacher Supervision-supervised time outside of class in team classroom</p> <p>Referral to Instructional Support Staff (i.e. School Counselor, School Psychologist, Social Worker)</p> | <p>Elementary: <i>1st Offense:</i> In school consequence up to 1 day of ISS <i>2nd Offense:</i> In school consequence up to 2 days ISS <i>3rd Offense:</i> Up to 3 days of OSS</p> <p>Secondary (Middle and High School): <i>1st Offense:</i> Up to 1 days of ISS <i>2nd Offense:</i> Up to 2 days of OSS <i>3rd Offense:</i> Up to 5 days of OSS</p> |

| Behavior Offense | Definition/Examples (Examples may not be inclusive of all possibilities.) | Classroom Consequences for Minor Instances (These are possible consequences identified and used by teacher discretion.) (Choose one or more of the following options.) | School-Wide Consequences for Major Instances (Office administered consequences by an administrator) |
|--|--|--|---|
| 034 UB: Gambling See Board Policy 4310. | Major: Student is playing games of chance for money; making a bet. | | Elementary: (possible police involvement) <i>1st Offense:</i> In School Consequence <i>2nd Offense:</i> In School Consequence, up to 2 days OSS <i>3rd Offense:</i> Up to 3 days of OSS Secondary (Middle and High School) : <i>1st Offense:</i> In School Consequence, up to 3 days of OSS <i>2nd Offense:</i> Up to 5 days of OSS <i>3rd Offense:</i> Up to 10 days of OSS |
| 035 UB: Falsification of information See Board Policy 4310. | Minor: Student delivers message that is untrue. Student has signed a person's name without the person's permission or used an electronic device to manipulate or change a document. (If a student changes grades- please see the Honor Code Violation Section.) | | <i>1st Offense:</i> In School Consequence up to 2 days of OSS <i>2nd Offense:</i> Up to 3 days of OSS |
| 036 UB: Theft See Board Policy 4330. | Minor: Student is in possession of, having passed on or being responsible for removing someone else's property (Example (s): Pencils, lunch, milk) Major: Student is in possession of, having passed on or being responsible for removing someone else's property (Example (s): Shoes, jacket, cellphone, computer) | Teacher Conference with Student Seat Change Loss of privileges Parent/Guardian Contact Conference with Parent Team Teacher Supervision- supervised time outside of class in team classroom School Counselor/Guidance Referral Administrative Conference | Larceny or theft of money or property (whose value is less than \$100): <i>1st Offense:</i> Up to 3 days OSS, Restitution, Police Involvement <i>2nd Offense:</i> Up to 5 days OSS, Restitution, Police Involvement <i>3rd Offense:</i> 6-10 days OSS, Restitution, Police Involvement Larceny or theft of money or property (whose value exceeds \$100): <i>1st Offense:</i> 3-5 days of OSS, Restitution, Police Involvement <i>2nd Offense:</i> 6-10 days of OSS, Restitution, Police Involvement |

| Behavior Offense | Definition/Examples (Examples may not be inclusive of all possibilities.) | Classroom Consequences for Minor Instances (These are possible consequences identified and used by teacher discretion.) (Choose one or more of the following options.) | School-Wide Consequences for Major Instances (Office administered consequences by an administrator) |
|--|---|--|---|
| 037 UB: Bus misbehavior | See document listed below this code of conduct | See document listed below this code of conduct | See document listed below this code of conduct |
| <p>038 UB: Harassment - sexual</p> <p>Title IX Sexual Harassment: Defined as unwelcome conduct determined by a reasonable person to be so severe, pervasive and objectively offensive that it denies a person equal access to the school system's education program or activities. Cases of sexual assault that meet this criterion are handled through a Title IX formal complaint. See Policy 1725/4035/7236: Title IX Sexual Harassment and Prohibited Conduct and Reporting Process.</p> | <p>Major: Sexual harassment refers to unwelcome sexual advances, requests for sexual favors, and other verbal or physical conduct of a sexual nature constitute sexual harassment when:</p> <p>Such conduct is sufficiently severe, persistent or pervasive that it has the purpose or effect of unreasonably interfering with a student's educational performance; limiting a student's ability to participate in or benefit from an educational program or environment; or creating an abusive, intimidating, hostile, or offensive work or educational environment (denies equal access to the school's education program or activity). Any of the following can be considered sexual harassment:</p> <ul style="list-style-type: none"> A. Any form of <i>quid pro quo</i> harassment B. Offensive Touching: Inappropriate fondling; placing hands on another person's private parts. C. Sexual Harassment: Verbal or physical abuse of a sexual nature. D. Indecent Exposure: Intentional exposure of private parts of one's body (including "mooning"). <p>Rape or Attempted Rape: Unlawful sexual intercourse or attempted sexual intercourse by force, threat, or fear. (See Reportable Offense)</p> | | Up to 10 days of OSS, Police involvement, Possible LTS |

| Behavior Offense | Definition/Examples (Examples may not be inclusive of all possibilities.) | Classroom Consequences for Minor Instances (These are possible consequences identified and used by teacher discretion.) (Choose one or more of the following options.) | School-Wide Consequences for Major Instances (Office administered consequences by an administrator) |
|--|---|---|--|
| 039 UB: Property damage See Board Policy 4330. See Board Policy 4335. | <p><u>Minor:</u> Student deliberately impairs the usefulness of property. (Examples may include: breaks a pencil, dumping tissue roll in the toilet, placing paper towels on the mirrors, etc.)</p> <p><u>Major:</u> Student participates in an activity that results in substantial destruction or disfigurement of property. This includes: Malicious injury to property or school bus (less than \$100) and property damage of \$100. Repetition of minor property damage that severely disrupts the learning environment and/or poses a safety issue.</p> <p>(Examples may include: Damage to seats to on buses, breaking chromebooks, writing on the walls (graffiti), breaking toilet fixtures)</p> | Teacher Conference with Student Seat Change Loss of privileges Parent/Guardian Contact Conference with Parent Team Teacher Supervision-supervised time outside of class in team classroom School Counselor/Guidance Referral Administrative Conference | <p>Property damage in less than \$100:</p> <p><i>1st Offense:</i> 0-3 days OSS, Restitution, Police Involvement <i>2nd Offense:</i> 3-5 days OSS, Restitution, Police Involvement <i>3rd Offense:</i> 6-10 days OSS, Restitution, Police Involvement</p> <p>Property damage in excess of \$100:</p> <p>0-10 days OSS, Police Involvement, Restitution</p> |
| 040 UB: Inappropriate items on school property | <p><u>Minor:</u> Possession of any object that could disrupt the normal order of school to include but not limited to personal security alarms, look-a-like beepers, toys, use of a recording device without permission, radio)</p> <p><u>Major:</u> Student is in possession of substances/objects readily capable of causing bodily harm and/ or property damage (matches, lighters, firecrackers, gasoline, lighter fluid). This may also include: Possession of a slingshot, a pocket knife, penknife, Swiss army knife having a blade less than 2.5 inches long, fireworks, bullets, or any other similar weapon or destructive device. Possession of a "look-alike" weapon.</p> | Teacher Conference with Student Seat Change Loss of privileges Parent/Guardian Contact Conference with Parent Administrative Conference | <p><i>1st Offense:</i> 1-5 days OSS, Police Involvement <i>2nd Offense:</i> 5-10 days OSS, Police Involvement, Alternative School Option (for middle and high school)</p> |

| Behavior Offense | Definition/Examples (Examples may not be inclusive of all possibilities.) | Classroom Consequences for Minor Instances (These are possible consequences identified and used by teacher discretion.) (Choose one or more of the following options.) | School-Wide Consequences for Major Instances (Office administered consequences by an administrator) |
|--|---|---|---|
| 041 UB: Possession of tobacco See Board Policy 4320. | <p><u>Major:</u> Possessing, or attempting to possess, any tobacco products. Tobacco products are defined as any product that contains tobacco and is intended for human consumption. Tobacco products include tobacco-derived products, vapor products, and components of vapor products.</p> <ul style="list-style-type: none"> • Tobacco-derived products are any non-combustible product derived from tobacco and contains nicotine whether chewed, absorbed, dissolved, ingested, or by other means. • Vapor products are any noncombustible product that employs a mechanical heating element, battery, or electronic circuit regardless of shape or size and that can be used to heat a liquid nicotine solution contained in a vapor cartridge. | | <p>Elementary: <i>1st Offense:</i> Confiscation of device & consultation with SRO; in-school consequence/parent contact <i>2nd Offense:</i> 1 day of OSS <i>3rd Offense:</i> Up to 3 days of OSS</p> <p>Secondary (Middle and High School): <i>1st Offense:</i> Confiscation of device & consultation with SRO; 1-2 days of ISS and completion of educational/prevention modules <i>2nd Offense:</i> Up to 3 days of OSS <i>3rd Offense:</i> Up to 10 days of OSS</p> |
| 042 UB: Disruptive behavior (continued to next page) See Board Policy 4315. | <p><u>Minor:</u> Student engages in low-intensity behaviors that are distracting to others or briefly interrupt instruction (ex. talking out of turn, making noises, making noises with materials). Examples:</p> <ul style="list-style-type: none"> • Chronic Talking: Repeated talking in the classroom without permission. • Refusing to Remain in Seat: Getting out of seat or moving seat without permission of staff member. | Warning Loss of privileges Use of Student Problem-Solving worksheet Seat change Parent contact Teacher conference with student | <p>Elementary: <i>1st Offense:</i> Parent Contact <i>2nd Offense:</i> In school consequence <i>3rd offense:</i> Up to 2 days OSS</p> <p>Secondary (Middle and High School): <i>1st Offense:</i> Up to 1 day of ISS <i>2nd Offense:</i> Up to 2 days of ISS <i>3rd Offense:</i> Up to 3 days of OSS</p> |

| Behavior Offense | Definition/Examples (Examples may not be inclusive of all possibilities.) | Classroom Consequences for Minor Instances (These are possible consequences identified and used by teacher discretion.) (Choose one or more of the following options.) | School-Wide Consequences for Major Instances (Office administered consequences by an administrator) |
|---|---|--|--|
| <p>042 UB: Disruptive behavior (continued from previous page)</p> <p>See Board Policy 4315.</p> | <ul style="list-style-type: none"> ● Making Noises: Making any unnecessary noise. ● Chronic Lack of Supplies: Repeatedly reporting to class lacking necessary material such as books, class supplies, etc. <p>Major: Behavior causing a significant interruption in a class or activity. This behavior would cause instruction to cease. Disruption includes, but is not limited to: (sustained loud talk, yelling, or screaming; extreme noise with materials in which one cannot hear conversation). This may include inciting or participating in Student Disorder. This may include leading or participating in any activity that has as its purpose the disruption of school business or which significantly affects the educational process:</p> <ul style="list-style-type: none"> ● Throwing Objects: Throwing any object in any part of the school, bus, or school grounds, unless directed by a staff member pursuant to instructional purposes. ● Horseplaying: Rough or noisy play or pranks. Horseplay is rough play involving one or two individuals engaged in physical contact without aggression or ● Anger: For the purpose of amusement for both involved individuals with no intent to harm. ● Leaving Without Permission: Leaving the classroom, building or assigned area without obtaining approval of the teacher and/or the administrator. ● Shoving and/or Kicking: Willfully pushing and or kicking objects. | <p>Parent/guardian involvement</p> <p>Phone call/ letter to parent or guardian</p> <p>In-Class Calm Down Time</p> <p>Team Time- supervised by another team teacher out of class</p> <p>If a student continues to engage in disruptive behavior and demonstrates loud verbal or nonverbal behaviors that interrupt instruction, staff members should redirect, restate the expectations, and give the student time to comply.</p> <p>Referral to Instructional Support Services Staff</p> | <p>administrator deems it appropriate, law enforcement may be called.</p> <p>Elementary: <i>1st Offense:</i> Parent Contact <i>2nd Offense:</i> In school consequence <i>3rd Offense:</i> Up to 2 days OSS</p> <p>Secondary (Middle and High School): <i>1st Offense:</i> Up to 1 day of ISS <i>2nd Offense:</i> Up to 2 days of ISS <i>3rd Offense:</i> Up to 3 days of OSS</p> <p>In the event that the disruption does not abate immediately or if the administrator deems it appropriate, law enforcement may be called.</p> |

| Behavior Offense | Definition/Examples (Examples may not be inclusive of all possibilities.) | Classroom Consequences for Minor Instances (These are possible consequences identified and used by teacher discretion.) (Choose one or more of the following options.) | School-Wide Consequences for Major Instances (Office administered consequences by an administrator) |
|--|--|--|--|
| 044 UB: Assault on student See Board Policy 4331. | <u>Major:</u> Assault on a student means to cause injury of any kind to a student while a student is at any school sponsored function on or off campus during or after regular school hours. | | Elementary: Up to 10 days of OSS, Police Involvement Secondary (Middle/High School) 3 to 10 days of OSS, Police Involvement, Possible LTS |
| 045 UB: Assault - other See Board Policy 4331. | <u>Major:</u> Actions involving serious physical contact where minor injury may occur (e.g. hitting, punching, hitting with an object, kicking, hair pulling, scratching) | | Elementary: Up to 10 days of OSS, Police Involvement Middle/High School: Up to 10 days of OSS, Police Involvement. |
| 046 UB: Possession of counterfeit items | <u>Major:</u> "Counterfeit item" means any goods, components of goods, or services made, produced, or knowingly sold or knowingly distributed that use or display a counterfeit mark. | | Elementary: Up to 10 days of OSS, Police Involvement Middle/High School: Up to 10 days of OSS, Police Involvement, Alternative School Placement; LTS/SCORE referral |
| 047 UB: Use of counterfeit items | <u>Major:</u> "Counterfeit item" means any goods, components of goods, or services made, produced, or knowingly sold or knowingly distributed that use or display a counterfeit mark. | | Elementary: Up to 10 days of OSS, Police Involvement Middle/High School: Up to 10 days of OSS, Police Involvement, Alternative School Placement; LTS/SCORE referral |
| 051 UB: Possession of a chemical or drug paraphernalia See Board Policy 4325. | <u>Major:</u> Student has possession of items that can be used for chemical or drug intake such as syringes, crack pipes, bongs, or anything that can be hinged on the determination of 'primary use.' (i.e. an item that has drug residue or is sold explicitly for drug use). This may also include chemicals to make, cultivate, or manufacture drugs (i.e. including equipment or chemicals). Per Board Policy, items also include synthetic substances such as THC. | | Up to 10 days of OSS, possible LTS and/or Alternative School Placement |

| Behavior Offense | Definition/Examples (Examples may not be inclusive of all possibilities.) | Classroom Consequences for Minor Instances (These are possible consequences identified and used by teacher discretion.) (Choose one or more of the following options.) | School-Wide Consequences for Major Instances (Office administered consequences by an administrator) |
|---|--|--|--|
| 052 UB: Bullying See Board Policy 4329/7311. | <p>Major: Any pattern of gestures or written, electronic, or verbal communications, or any physical act or any threatening communication that takes place on school property, at any school-sponsored function, or on a school bus, and that:</p> <ul style="list-style-type: none"> ● Places a student or school employee in actual and reasonable fear of harm to his or her person or damage to his or her property; or ● creates or is certain a hostile environment by substantially interfering with or impairing a students’ educational performance, opportunities, or benefits. For purposes of this section “hostile environment” means that the victim subjectively views the conduct as bullying or harassing behavior and the conduct is objectively severe or pervasive enough that a reasonable person would agree that it is bullying or harassing behavior. ● Bullying or harassing behavior includes, but is not limited to, acts reasonably perceived as religion, ancestry, national origin, gender, socioeconomic status, academic status, gender identity, physical appearance, sexual orientation, or mental, physical, developmental, or sensory disability, or by association with a person who has or is perceived to have one or more these characteristics. ● Bullying may be one or more of the following: <ul style="list-style-type: none"> ○ Written, electronic, or verbal; ○ Physical; ○ Social or relational; OR ○ Harassment <p>*See UB 094 for cyberbullying.</p> | Teacher Conference with Student Seat Change Loss of privileges Parent/Guardian Contact Conference with Parent Team Teacher Supervision-supervised time outside of class in team classroom School Counselor Referral Administrative Conference For elementary: Supervised playground activity | <p>Elementary: <i>1st Offense:</i> In School Consequence up to 1 day of OSS <i>2nd Offense:</i> Up to 2 days OSS <i>3rd Offense:</i> Up to 3 days of OSS</p> <p>Middle/High School: <i>1st Offense:</i> Up to 3 days of OSS <i>2nd Offense:</i> Up to 5 days of OSS <i>3rd Offense:</i> Up to 10 days of OSS</p> |
| Behavior Offense | Definition/Examples | Classroom Consequences for Minor Instances | School-Wide Consequences for Major Instances |

| | (Examples may not be inclusive of all possibilities.) | (These are possible consequences identified and used by teacher discretion.) (Choose one or more of the following options.) | (Office administered consequences by an administrator) |
|--|---|---|--|
| 058 UB: Other School Defined Offense | <p>Recommended not to use this code in RCS. Use only with caution.</p> <p><u>Minor:</u> Student engages in any other minor problem behaviors that do not fall within the above categories.</p> <p><u>Major:</u> Student engages in any other minor problem behaviors that do not fall within the above categories</p> | <p>Recommended not to use this code in RCS. Use only with caution.</p> | <p>Recommended not to use this code in RCS. Use only with caution.</p> |
| 059 UB: Being in an unauthorized area | <p><u>Major:</u> Students deliberately go in an area that they are not allowed. (Example: walking around school building, student has a bathroom pass and is found in media center)</p> | | <p><i>1st Offense:</i> In school consequence <i>2nd Offense:</i> Up to 2 days of OSS <i>3rd Offense:</i> Up to 3 days of OSS</p> |
| 060 UB: Cell phone use See Board Policy 4318. | See the District Policies on the use of Cell Phones & Technology Acceptable Use | See the District Policies on the use of Cell Phones & Technology Acceptable Use | See the District Policies on the use of Cellphones & Technology Acceptable Use |
| 061 UB: Disrespect of faculty/staff | <p><u>Minor:</u> Student engages in brief or low-intensity failure to respond to adult requests by the following behaviors (ex. Engaging in verbal retort back to a staff member, making inappropriate comments or gestures)</p> <p><u>Major:</u> Student engages in use of profanity directed at a staff member/teacher in verbal or written form and continuing to argue after multiple redirections.</p> | <p>Teacher pause; Cross Teaming; Cool Down</p> <p>Restate request; Redirection</p> <p>Teacher Conference w/Student</p> <p>Seat Change; Loss of privileges</p> <p>Parent/Guardian Contact; Conference with Parent</p> <p>Team Teacher Supervision; Supervised time outside of class in team classroom</p> <p>School Counselor/Guidance Referral</p> <p>Administrative Conference; Supervised playground activity</p> | <p>Elementary:</p> <p><i>1st Offense:</i> Parent Contact and In School Consequence up to 1 day of OSS <i>2nd Offense:</i> In School Consequence up to 2 days of OSS <i>3rd Offense:</i> Up to 3 days of OSS</p> <p>Secondary (Middle/High School):</p> <p><i>1st Offense:</i> In School Consequence up to 3 days of OSS <i>2nd Offense:</i> In School Consequence up to 5 days of OSS <i>3rd Offense:</i> In School Consequence up to 10 days of OSS</p> |
| Behavior Offense | Definition/Examples | Classroom Consequences for Minor Instances | School-Wide Consequences for Major Instances |

| | (Examples may not be inclusive of all possibilities.) | (These are possible consequences identified and used by teacher discretion.) (Choose one or more of the following options.) | (Office administered consequences by an administrator) |
|---|---|---|--|
| 062 UB: Do NOT Use | PowerSchool has requested the code not be used. | | |
| 063 UB: Excessive display of affection | <p><u>Minor:</u> Student engages in appropriate contact (hug or kiss).</p> <p><u>Major:</u> Student engages in inappropriate (as defined by school) verbal and/or physical gestures/ contact, of a sexual nature to another student/adult, either consensual or non-consensual.</p> | Communicate School Wide Expectations | <p><i>1st Offense:</i> In School Consequence up to 2 days of OSS</p> <p><i>2nd Offense:</i> Up to 3 days of OSS</p> <p><i>3rd Offense:</i> Up to 5 days of OSS</p> |
| 064 UB: Excessive tardiness See Board Policy 4400. | <p><u>Major:</u> Failure to be in place of instruction at the required starting time (Example did not report to class by required starting time)</p> <p>(Tardies 1-11 are coded in “Late to Class”)</p> | Schools encourage students by creating incentives to promote attendance and promptness to class. Contact your child's school for incentives for attendance. | <p>Elementary <i>Parents are required to come in upon arrival and sign students in at the office for all tardies.</i></p> <p><i>*NOTE: Tardies 1-11 are coded in “Late to Class”</i></p> <p>Elementary School: <i>12 tardies and Beyond: Student is ineligible for ANNUAL perfect attendance award; disciplinary actions could be assigned by administration (i.e., ISS, after-school detention, silent lunch, etc. at principal discretion), Involvement of School Social Worker</i></p> <p>Middle School: <i>Consequences start over at the beginning of each nine-week period. Parents are required to come in upon arrival and sign students in at the office for all tardies.</i></p> <p><i>12 tardies and Beyond: Student is ineligible for ANNUAL perfect attendance award; disciplinary actions could be assigned by administration (i.e., ISS, after-school detention, silent lunch, etc. at principal discretion), Involvement of School Social Worker</i></p> <p>High School <i>Consequences start over at the beginning of each nine weeks.</i></p> <p><i>12 tardies: Up to 2 Days of OSS, Involvement of School Social Worker</i></p> |
| Behavior Offense | Definition/Examples | Classroom Consequences for Minor Instances | School-Wide Consequences for Major Instances |

| | (Examples may not be inclusive of all possibilities.) | (These are possible consequences identified and used by teacher discretion.) (Choose one or more of the following options.) | (Office administered consequences by an administrator) |
|--|--|---|--|
| 065 UB: No Immunization | Students does not have correct immunizations as listed in the Parent Handbook. | Parent Contact | Non-compliance of requirements for immunization law within 30 days of school entry is reason for suspension from school. |
| 066 & 067 | <i>For clarification purposes .Do NOT use. Please see another appropriate code</i> | | |
| 068 UB: Mutual sexual contact between two students | <u>Major:</u> Sexual activity involving willing participants on school property or during a school function. | | Up to 10 days of OSS, <i>*LTS may be used in extreme violations at administrator discretion.</i> |
| 069 UB: Other | <u>Minor:</u> Student engages in any other minor problem behaviors that do not fall within the above categories <u>Major:</u> Student engages in any other major problem behaviors that do not fall within the above categories | Recommended not to use this code in RCS. Use only with caution. | Recommended not to use this code in RCS. Use only with caution. |
| 070 UB: Use of tobacco See Board Policy 4320. | <u>Major:</u> Use (smoking, dipping) or possession of tobacco products or any other instrument used to deliver chemical substances to be inhaled or otherwise absorbed into the body) on school property or at school events. The use of any tobacco products. Tobacco products are defined as any product that contains tobacco and is intended for human consumption. Tobacco products include tobacco-derived products, vapor products, and components of vapor products. o Tobacco-derived products are any non-combustible product derived from tobacco and contains nicotine whether chewed, absorbed, dissolved, ingested, or by other means. o Vapor products are any noncombustible product that employs a mechanical heating element, battery, or electronic circuit regardless of shape or size and that can be used to heat a liquid nicotine solution contained in a vapor cartridge. | | <u>Elementary:</u> <i>1st Offense:</i> Confiscation of device & consultation with SRO; in-school consequence/parent contact <i>2nd Offense:</i> 1 day of OSS <i>3rd Offense:</i> Up to 3 days of OSS <u>Secondary (Middle and High School):</u> <i>1st Offense:</i> Confiscation of device & consultation with SRO; 1-2 days of ISS and completion of educational/prevention modules <i>2nd Offense:</i> Up to 3 days of OSS <i>3rd Offense:</i> Up to 10 days of OSS |
| Behavior Offense | Definition/Examples (Examples may not be inclusive of all possibilities.) | Classroom Consequences for Minor Instances | School-Wide Consequences for Major Instances |

| | | (These are possible consequences identified and used by teacher discretion.) (Choose one or more of the following options.) | (Office administered consequences by an administrator) |
|---|---|---|--|
| 071 UB: Assault on non -student w/o weapon & not resulting in serious injury See Board Policy 4331. | Major: Exchanging mutual physical contact between students by pushing, shoving, or hitting with or without injury with a person who is not a student on RCS property or at an RCS function. | | Up to 10 days of OSS, Police Involvement, possible LTS and or Alternative School Referral/Placement |
| 072 UB: Assault on student w/o weapon & not resulting in serious injury See Board Policy 4331. | Major: An assault is viewed as one person physically attacking another when there is a clear victim. Unlawful threatening or any physical force or violence, to include tearing clothes, striking, or threatening to seize or strike another person either alone or in combination with another student (s). | | Up to 10 days of OSS, Police Involvement, possible LTS and or Alternative School Referral/Placement |
| 074 UB: Cutting Class See Board Policy 4400. | Major: Cutting class involves attending school but not going to class (student remains on campus). | Schools encourage students by creating incentives to promote attendance and promptness to class. Contact your child's | Elementary In school consequence and parent contact Middle School <i>1 to 2 Times:</i> In school consequences and phone parent <i>3-4 Times:</i> Up to one day of ISS and parent phone call <i>5 or More:</i> Up to 3 days of ISS and parent phone call High School <i>1-2 Times:</i> In school consequence and parent phone call <i>3-4 Times:</i> up to one day of ISS and parent phone call <i>5 or More:</i> Up to 3 days of ISS and parent phone call |
| Behavior Offense | Definition/Examples | Classroom Consequences for Minor Instances | School-Wide Consequences for Major Instances |

| | (Examples may not be inclusive of all possibilities.) | (These are possible consequences identified and used by teacher discretion.) (Choose one or more of the following options.) | (Office administered consequences by an administrator) |
|--|---|---|--|
| 075 UB: Skipping school See Board Policy 4400. | Students leave campus without permission (left school without permission) for any length of time. | Schools encourage students by creating incentives to promote attendance and promptness to class. Contact your child's school for incentives for attendance. | <p>Elementary In school consequence and parent contact</p> <p>Middle School: <i>1 Time:</i> In school consequence and parent phone call <i>2 Times:</i> Up to one day of ISS <i>3 – 4 Times:</i> Up to 2 day 2 of ISS and parent phone call <i>5 or More Times:</i> Up to 3 days of ISS and parent phone call</p> <p>High School <i>1 Time:</i> In school consequence and parent phone call <i>2 Times:</i> Up to one day of ISS <i>3 – 4 Times:</i> Up to 2 day 2 of ISS and parent phone call <i>5 or More Times:</i> Up to 3 days of ISS and parent phone call</p> |
| 076 UB: Do not Use | PowerSchool has requested this code not be used. | | |
| 077 UB: Physical exam | Student does not have required physical exams to attend school | | See School Policy regarding Kindergarten Immunization and Physical Requirements. |
| Behavior Offense | Definition/Examples (Examples may not be inclusive of all possibilities.) | Classroom Consequences for Minor Instances | School-Wide Consequences for Major Instances |

| | | (These are possible consequences identified and used by teacher discretion.) (Choose one or more of the following options.) | (Office administered consequences by an administrator) |
|--|---|--|--|
| <p>078 UB: Late to class</p> <p>See Board Policy 4400.</p> | <p>Minor: Failure to be in place of instruction at the assigned time without a valid excuse. (Late to class 1-9)</p> <p>Major: Failure to be in place of instruction at the assigned time without a valid excuse more than 10 times. (Note: 12 or more more times, use code Excessive Tardiness UB 064)</p> | <p>Schools encourage students by creating incentives to promote attendance and promptness to class. Contact your child's school for incentives for attendance.</p> | <p>Elementary <i>Parents are required to come in upon arrival and sign students in at the office for all tardies.</i></p> <p><i>1-4 Times:</i> Parents receive a reminder note <i>5 Times:</i> Tardy procedures requiring parent signature will be sent home <i>10-11 Times:</i> Contact by principal or designee with agreed upon interventions. <i>12 Times and Beyond:</i> See Excessive Tardiness (UB 064)</p> <p>Middle School: <i>Consequences start over at the beginning of each six week period. Parents are required to come in upon arrival and sign students in at the office for all tardies.</i></p> <p><i>1-4 Times:</i> Parents receive a reminder note <i>5 Times:</i> Tardy procedures requiring parent signature will be sent home <i>10-11 Times:</i> Contact by principal or designee with agreed upon interventions. <i>12 Times and Beyond:</i> See Excessive Tardiness (UB 064)</p> <p>High School <i>Consequences start over at the beginning of each nine weeks.</i></p> <p><i>1-4 Times:</i> Warning/Call home (Alert Now or Personal) <i>5-8 Times:</i> 1 Period of ISS <i>9-11 Times:</i> 1 Day of ISS <i>12 Times:</i> See Excessive Tardiness (UB 064)</p> |

| Behavior Offense | Definition/Examples (Examples may not be inclusive of all possibilities.) | Classroom Consequences for Minor Instances (These are possible consequences identified and used by teacher discretion.) (Choose one or more of the following options.) | School-Wide Consequences for Major Instances (Office administered consequences by an administrator) |
|---|---|---|---|
| 079 UB: Gang activity See Board Policy 4328. | <p><u>Major:</u> A gang is any ongoing organization, association, or group of three or more persons, whether formal or informal, having as its primary activities the commission of criminal acts and having a common name, identifying sign, colors or symbols.</p> <p><u>Conduct prohibited by this policy includes:</u></p> <ul style="list-style-type: none"> • Wearing, possessing, using, distributing, displaying, or selling any clothing, jewelry, emblems, badges, symbols, signs, visible tattoos, and body markings, or other items, or bring in possession of literature that show affiliation with a gang, or is evidence of membership or affiliation in any gang or with the purpose of promoting gang affiliation; • Communicating either verbally or non-verbally (gestures, handshakes, slogans, drawings, etc.), to convey membership affiliation in any gang or that promotes gang affiliation; • Tagging, or otherwise defacing school or personal property with gang or gang-related symbols or slogans; • Requiring payment of protection, money, or insurance, or otherwise intimidating or threatening any person related to gang activity; • Inciting other students to intimidate or to act with physical violence upon any other person related to gang activity; • Soliciting others for gang membership; • Conspiring to commit any violation of this policy or committing or conspiring to commit any other illegal act or other violation of school district policies that related to gang activity. <p>Gang activity in G.S. §14-50.16 is define as the commission of, attempted commission of, or solicitation, coercion, or intimidation of another person to commit (i) any offense under Article 5 of Chapter 90 of the General Statutes or (ii) any offense under Chapter 14 of the General Statutes except Article 9, 22A, 40, 46, or 59 thereof, and further excepting G.S. 14-82, 14- 145, 14-183, 14-184, 14-186, 14-190.9, 14-247, 14-248, or 14-313 thereof, and either of the following conditions is met:</p> | | <p><i>1st Offense:</i> Parent Contact, In school consequence up to 2 days of OSS, possible police involvement</p> <p><i>2nd Offense:</i> Parent Contact, Up to 5 days of OSS, possible police involvement</p> <p><i>3rd Offense:</i> Up to 10 days of OSS, LTS, possible police involvement</p> |

| Behavior Offense | Definition/Examples (Examples may not be inclusive of all possibilities.) | Classroom Consequences for Minor Instances (These are possible consequences identified and used by teacher discretion.) (Choose one or more of the following options.) | School-Wide Consequences for Major Instances (Office administered consequences by an administrator) |
|---|---|--|---|
| 079 UB: Gang activity (continued) See Board Policy 4328. | A.The offense is committed with the intent to benefit, promote, or further the interests of a criminal gang or for the purposes of increasing a person's own standing or position within a criminal gang. B. The participants in the offense are identified as criminal gang members acting individually or collectively to further any criminal purpose of a criminal gang. • It is unlawful for any person to cause, encourage, solicit, or coerce a person 16 years of age or older to participate in criminal gang activity. • It is unlawful for any person to communicate a threat of injury to a person, or to damage the property of another, as punishment or retaliation against a person for having withdrawn from a criminal gang. • It is unlawful for any person to injure a person with the intent to deter a person from assisting another to withdraw from membership in a criminal gang • It is unlawful for any person to injure a person as punishment or retaliation against a person for having withdrawn from a criminal gang. | | |
| 080 UB: Discrimination See Board Policy 4329/7311. | <p>Major: The Code of Student Conduct defines bias motivated behaviors as behavior offenses committed against a person or property which is motivated by the offender's bias, a negative opinion or attitude toward a group of persons based on their race, religion, disability, sexual orientation, or ethnicity/national origin.</p> <p>Disability bias is defined as a bias based on physical or mental impairments/challenges, temporary or permanent, congenital or hereditarily acquired, accident, injury, advanced age or illness.</p> <p>Ethnicity/National Origin Bias is defined as a bias toward a group of persons of the same race or national origin who share common or similar traits, languages, customs, and traditions.</p> <p>Hate crime is defined as bias behavior that is a criminal offense.</p> <p>(see continued on next page)</p> | | <p><i>1st Offense:</i> In school consequence up to 2 days of OSS</p> <p><i>2nd Offense:</i> Up to 3 days of OSS</p> <p><i>3rd Offense:</i> Up to 5 days of OSS</p> |

| Behavior Offense | Definition/Examples (Examples may not be inclusive of all possibilities.) | Classroom Consequences for Minor Instances (These are possible consequences identified and used by teacher discretion.) (Choose one or more of the following options.) | School-Wide Consequences for Major Instances (Office administered consequences by an administrator) |
|---|---|--|--|
| 080 UB: Discrimination (continued) See Board Policy 4329/7311. | <p>Racial bias is bias toward a group of persons who possess common physical characteristics, i.e., color of skin, eyes, hair, facial features, genetically transmitted by descent and heredity which distinguish them as a distinct division of humankind.</p> <p>Religious bias is defined as a bias toward a group of persons who share the same religious beliefs regarding the origin and purpose of the universe and the existence or non-existence of a supreme being.</p> <p>Sexual-Orientation bias is defined as a bias toward a group of persons based on their sexual attraction toward and responsiveness to members of the opposite or same sex.</p> | | |
| 086 UB: Possession of student's own prescription drug See Board Policy 4325. | <p>Major: Student has possession of prescription in school, on school grounds, on school bus, or at any school function not otherwise specified in a student's health care plan.</p> <p>"Actual" Possession: This is where the person physically has control over the substance. In most cases, this means that they are carrying it and have the ability to control it.</p> <p>"Constructive" Possession: This may occur when the substance is not actually physically on the person, but is found on or around the person's property.</p> | | <p><i>1st Offense:</i> Parent Consequence</p> <p><i>2nd Offense:</i> In school Consequence up to 5 days OSS</p> <p><i>3rd Offense:</i> Up to 10 days of OSS</p> |
| 090 UB: Violent assault not resulting in serious injury See Board Policy 4331. | <p>Major: An assault is viewed as one person physically attacking another when there is a clear victim and using excessive force. The victim usually has not retaliated beyond a possible action attempting to get the assailant to stop the assault (not mutual fighting). Unlawful threatening or any physical force or violence, to include tearing clothes, striking, or threatening to seize or strike another student either alone or in combination with another student(s).</p> | | Up to 10 days of OSS, possible LTS, Police Involvement |
| 091 UB: Misuse of school technology See Board Policy 4318. | <p>Major: Student intentionally misuses school technology in a manner that does cause or may cause harm or injury to, property, services, and people, regardless of whether such consequence was intended.</p> | Please see district policy on Technology Use. | Please see district policy on Technology Use. |

| Behavior Offense | Definition/Examples (Examples may not be inclusive of all possibilities.) | Classroom Consequences for Minor Instances (These are possible consequences identified and used by teacher discretion.) (Choose one or more of the following options.) | School-Wide Consequences for Major Instances (Office administered consequences by an administrator) |
|--|--|---|--|
| 092 UB: Repeat offender | <u>Major:</u> Student has already been referred to the office for the same behavior (3 or more times) and who has been caught again for committing the same infraction (3 or more times). | Warning Loss of privileges Use of Student Problem-Solving worksheet Seat change Parent contact Teacher conference with student Confiscation of item Parent/guardian involvement Phone call/ letter to parent or guardian In-Class Calm Down Time Team Time- supervised by another team teacher out of class | *Recommended not for use. Use with caution. Elementary: <i>1st Offense:</i> 0-1 days OSS <i>2nd Offense:</i> 1- 2 days OSS <i>3rd offense:</i> Up to 3 days of OSS Secondary (Middle and High School): <i>1st Offense:</i> Up to 1 days of ISS <i>2nd Offense:</i> Up to 2 days of OSS <i>3rd Offense:</i> Up to 5 days of OSS |
| 093 UB: Robbery without a weapon See Board Policy 4330. | <u>Major:</u> Any person or persons who unlawfully takes or attempts to take personal property from another or from any place of business, residence, or banking institution or any other place where there is a person or persons in attendance, at any time, either day or night, or who aids or abets any such person or persons in the commission of such conduct. (i.e. The taking of money or goods that are in the possession of another person or entity by force or intimidation.) | | Up to 10 days of OSS, Restitution, Police Involvement, LTS, Score Referral |
| 094 UB: Cyber-bullying See Board Policy 4329/7311. | <u>Major:</u> A person who uses a computer or computer network to do any of the following: With intent to intimidate or torment a minor: <ul style="list-style-type: none"> ● Build a fake profile or website; ● Pose as a minor in 1) an internal chat room; 2) an electronic mail message; or 3) an instant message; ● Follow a minor online or into an internet chat room; or | | Elementary: <i>1st Offense:</i> In School Consequence up to 3 day of OSS <i>2nd Offense:</i> Up to 5 days OSS <i>3rd Offense:</i> Up to 10 days of OSS Middle/High School: <i>1st Offense:</i> Up to 3 days of OSS |

| | | | |
|---|--|--|--|
| <p>094 UB: Cyber-bullying</p> <p>See Board Policy 4329/7311.</p> <p>(CONTINUED)</p> | <ul style="list-style-type: none"> ● Post or encourage others to post on the Internet private, personal, or sexual information pertaining to a minor. <p>With intent to intimidate or torment a minor or the minor’s parent or guardian:</p> <ul style="list-style-type: none"> ● Post a real or doctored image of a minor on the Internet; ● Access, alter, or erase any computer network, computer data, computer program, or computer software, including breaking into a password protected account or stealing or otherwise accessing passwords; or ● Use a computer system for repeated, continuing or sustained electronic communications, including electronic mail or other transmissions, to a minor. ● Make any statement, whether true or false, intending to immediately provoke, and that is likely to provoke, any third party to stalk or harass a minor. ● Copy and disseminate, or cause to be made, an unauthorized copy of any data pertaining to a minor for the purpose of intimidating or tormenting that minor (in any form, including, but not limited to, any printed or electronic form or computer data, computer programs, or computer software residing in, communicated by, or produced by a computer or computer network.) ● Sign up for a minor for a pornographic Internet site with the intent to intimidate or torment the minor. ● Without authorization of the minor or the minor’s parent or guardian, sign up a minor for electronic mailing lists or to receive junk messages and instant messages, with the intent to intimidate or torment the minor. <p>A person who uses the computer or computer network to do any of the following (with intent to intimidate or torment a school employee):</p> <ul style="list-style-type: none"> ● Build a fake profile or website; ● Post or encourage others to post on the Internet private, personal, or sexual information pertaining to a school employee. ● Post a real or doctored image of the school employee on the Internet. ● Access, alter, or erase any computer network, computer data, computer | | <p><i>2nd Offense:</i> Up to 5 days of OSS</p> <p><i>3rd Offense:</i> Up to 10 days of OSS</p> |
|---|--|--|--|

| | | | |
|---|---|--|--|
| <p>094 UB: Cyber-bullying</p> <p>See Board Policy 4329/7311.</p> <p>(CONTINUED)</p> | <p>program, or computer software, including breaking into a password-protected account or stealing or otherwise accessing passwords.</p> <ul style="list-style-type: none"> ● Use a computer system for repeated, continuing, or sustained electronic communications, including electronic mail or other transmissions, to a school employee. ● Make any statement, whether true or false, intending to immediately provoke, and that is likely to provoke, any third party to stalk or harass the employee. ● Copy and disseminate, or cause to be made, an unauthorized copy of any data pertaining to a employee for the purpose of intimidating or tormenting that minor (in any form, including, but not limited to, any printed or electronic form or computer data, computer programs, or computer software residing in, communicated by, or produced by a computer or computer network.) ● Sign up for a pornographic Internet site with the intent to intimidate or torment the minor. ● Without authorization of the school employee, sign up a school employee for electronic mailing lists or to receive junk messages and instant messages, with the intent to intimidate or torment the minor. | | |
|---|---|--|--|

| Behavior Offense | Definition/Examples (Examples may not be inclusive of all possibilities.) | Classroom Consequences for Minor Instances (These are possible consequences identified and used by teacher discretion.) (Choose one or more of the following options.) | School-Wide Consequences for Major Instances (Office administered consequences by an administrator) |
|--|---|--|---|
| 095 UB: Under the influence of alcohol See Board Policy 4325. | <u>Major:</u> Drinking (under influence) any alcoholic beverage in school, on school grounds, to and from school, and on school bus or at any school function, or coming to school or school activities after consumption. | | Up to 10 days of OSS, Police Involvement, LTS, Score Referral |
| 096 UB: Under the influence of controlled substances See Board Policy 4325. | <u>Major:</u> Using (or under influence) of any narcotic, illegal or controlled drug, anabolic steroid or any illegal substance, on school grounds, to and from school, on school bus, or at any school function, or coming to school or school activities after consumption. | | Up to 10 days of OSS, Police Involvement, LTS, Score Referral |
| 101 UB: Harassment-Racial See Board Policy 1710/4020/723 Q. | <u>Major:</u> Ethnicity/National Origin harassment is defined as a bias toward a group of persons of the same race or national origin who share common or similar traits, languages, customs, and traditions. Harassment-Racial refers to intimidation or abusive behavior toward a student based on actual or race, color or national origin. Harassing conduct may take many forms, including verbal acts and name-calling, as well as non-verbal behavior, such as graphic and written statements, or conduct that is physically threatening, harmful or humiliating. The conduct can be carried out by other students, school employees, and non-employee third parties. | | <i>1st Offense:</i> In school consequence up to 3 days of OSS <i>2nd Offense:</i> Up to 5 days of OSS <i>3rd Offense:</i> Up to 10 days of OSS |
| 102 UB: Harassment-Disability See Board Policy 1730/4022/723 1. | <u>Major:</u> Disability harassment is defined as a bias based on physical or mental impairments/challenges, temporary or permanent, congenital or hereditarily acquired, accident, injury, advanced age or illness. Harassment- Disability refers to intimidation or abusive behavior toward a student based on the student’s actual or perceived disability- such as | | <i>1st Offense:</i> In school consequence up to 3 days of OSS <i>2nd Offense:</i> Up to 5 days of OSS <i>3rd Offense:</i> Up to 10 days of OSS |

| Behavior Offense | Definition/Examples (Examples may not be inclusive of all possibilities.) | Classroom Consequences for Minor Instances (These are possible consequences identified and used by teacher discretion.) (Choose one or more of the following options.) | School-Wide Consequences for Major Instances (Office administered consequences by an administrator) |
|--|---|---|---|
| 102 UB: (CONTINUED) Harassment-Disability See Board Policy 1730/4022/723 1. | physical, developmental, intellectual, emotional, or sensory disability. Harassing conduct may take many forms, including verbal acts and name-calling, as well as non-verbal behavior, such as graphic and written statements, or conduct that is physically threatening, harmful or humiliating. The conduct can be carried out by other students, school employees, and non-employee third parties. | | <i>1st Offense:</i> In school consequence up to 3 days of OSS <i>2nd Offense:</i> Up to 5 days of OSS <i>3rd Offense:</i> Up to 10 days of OSS |
| 105 UB: Threat of physical attack with a firearm See Board Policy 4331. See Board Policy 4333. | <p>Major: A threat of physical attack with a firearm is:</p> <p>G.S. §14-277.1: a person (1) willfully threatens to physically injure the person or that person's child, sibling, spouse, or dependent or willfully threatens to damage the property of another; (2) the threat is communicated to the other person, orally, in writing, or by any other means; (3) the threat is made in a manner and under circumstances which would cause a reasonable person to believe that the threat is likely to be carried out; and (4) the person threatened believes that the threat will be carried out. •</p> <p>Federal reporting requirements: "A threat of physical attack with a weapon includes displaying, brandishing, or discharging a weapon, but with no actual physical contact of any person. A threat is made in person. Threats made over the telephone or threatening letters are excluded. A threat of physical attack using words that refer to a weapon would not be considered a threat with a weapon."</p> <p>Threat of physical attack with a firearm" should be used when the threat to physically injure a person involves the use of a firearm. The threat is made in person and the firearm is displayed, brandished, or discharged. Using words that refer to a weapon or firearm, but no weapon or firearm is displayed, brandished or discharged, would be considered a threat of physical attack without a weapon, not a threat of physical attack with a firearm. Also enter the behavior type of "009:RO - Possession of Firearm" if the firearm meets the state definition of a weapon.</p> | | Up to 10 days OSS, Police Involvement, LTS, Alternative School Placement |

| Behavior Offense | Definition/Examples (Examples may not be inclusive of all possibilities.) | Classroom Consequences for Minor Instances (These are possible consequences identified and used by teacher discretion.) (Choose one or more of the following options.) | School-Wide Consequences for Major Instances (Office administered consequences by an administrator) |
|---|---|--|---|
| <p>106 UB: Threat of physical attack with a weapon</p> <p>See Board Policy 4331.</p> <p>See Board Policy 4333.</p> | <p><u>Major</u>: a threat of physical attack with a weapon is:</p> <p>G.S. §14-277.1: a person who (1) willfully threatens to physically injure the person or that person's child, sibling, spouse, or dependent or willfully threatens to damage the property of another; (2) the threat is communicated to the other person, orally, in writing, or by any other means; (3) the threat is made in a manner and under circumstances which would cause a reasonable person to believe that the threat is likely to be carried out; and (4) the person threatened believes that the threat will be carried out. — 52— Return to Table of Contents • Federal reporting requirements: “A threat of physical attack with a weapon includes displaying, brandishing, or discharging a weapon, but with no actual physical contact of any person. A threat is made in person. Threats made over the telephone or threatening letters are excluded. A threat of physical attack using words that refer to a weapon would not be considered a threat with a weapon.”</p> <p>Threat of physical attack with a weapon” should be used when the threat to physically injure a person involves the use of a weapon. The threat is made in person and the weapon is displayed and brandished. Using words that refer to a weapon or firearm, but no weapon or firearm is displayed, brandished or discharged, would be considered a threat of physical attack without a weapon, not a threat of physical attack with a weapon. o Also enter the behavior type of “008:RO - Possession of Weapon” if the weapon meets the state definition of a weapon.</p> | | <p>Up to 10 days OSS, Police Involvement, LTS, Alternative School Placement</p> |

| Behavior Offense | Definition/Examples (Examples may not be inclusive of all possibilities.) | Classroom Consequences for Minor Instances (These are possible consequences identified and used by teacher discretion.) (Choose one or more of the following options.) | School-Wide Consequences for Major Instances (Office administered consequences by an administrator) |
|--|--|--|---|
| <p>107 UB: Threat of physical attack without a weapon</p> <p>See Board Policy 4331.</p> <p>See Board Policy 4333.</p> | <p><u>Major:</u> Imminent threat of physical attack without a weapon as unprovoked aggressive action toward another person.</p> <p>G.S. §14-277.1: a person who (1) willfully threatens to physically injure the person or that person's child, sibling, spouse, or dependent or willfully threatens to damage the property of another; (2) the threat is communicated to the other person, orally, in writing, or by any other means; (3) the threat is made in a manner and under circumstances which would cause a reasonable person to believe that the threat is likely to be carried out; and (4) the person threatened believes that the threat will be carried out. — 52— Return to Table of Contents • Federal reporting requirements: “A threat of physical attack with a weapon includes displaying, brandishing, or discharging a weapon, but with no actual physical contact of any person. A threat is made in person. Threats made over the telephone or threatening letters are excluded. A threat of physical attack using words that refer to a weapon would be considered a threat without a weapon.”</p> | | <p>Up to 10 days OSS, Police Involvement, LTS, Alternative School Placement</p> |
| <p>109 UB: Harassment-Sexual Orientation</p> <p>See Board Policy 1710/4020/7230.</p> | <p><u>Major:</u> Harassment refers to intimidation or abusive behavior toward a student on actual or perceived sexual orientation.</p> <p>Harassing conduct may take many forms, including verbal acts and name-calling, as well as non-verbal behavior, such as graphic and written statements, or conduct that is physically threatening, harmful or humiliating. The conduct can be carried out by other students, school employees, and non-employee third parties.</p> | | <p><i>1st Offense:</i> In school consequence; Up to 3 days of OSS</p> <p><i>2nd Offense:</i> Up to 5 days of OSS</p> <p><i>3rd Offense:</i> Up to 10 days of OSS</p> |

| Behavior Offense | Definition/Examples (Examples may not be inclusive of all possibilities.) | Classroom Consequences for Minor Instances (These are possible consequences identified and used by teacher discretion.) (Choose one or more of the following options.) | School-Wide Consequences for Major Instances (Office administered consequences by an administrator) |
|--|--|--|---|
| 110 UB: Harassment-Religious affiliation See Board Policy 1710/4020/723 Q. | <p>Major: Religious harassment is defined as a bias toward a group of persons who share the same religious beliefs regarding the origin and purpose of the universe and the existence or non-existence of a supreme being.</p> <p>Harassment refers to intimidation or abusive behavior toward a student based on actual or perceived religion. Harassing conduct may take many forms, including verbal acts and name-calling, as well as non-verbal behavior, such as graphic and written statements, or conduct that is physically threatening, harmful or humiliating. The conduct can be carried out by other students, school employees, and non-employee third parties.</p> | | <p><i>1st Offense: In school consequence; Up to 3 days of OSS</i></p> <p><i>2nd Offense: Up to 5 days of OSS</i></p> <p><i>3rd Offense: Up to 10 days of OSS</i></p> |
| 114 UB: Inappropriate Behavior | <p>Minor: Student has engaged in behavior that is not within the bounds of what is considered appropriate or socially acceptable. (Only use this code if no other code explains the behavior.)</p> <p>Major: Student has engaged in behavior that is not within the bounds of what is considered socially appropriate or socially acceptable that is substantially or repeatedly interfere with the conduct of the class, excluding Physical Aggression, Object Aggression, Verbal Aggression and Bullying/Intimidation). Only use this code if no other code explains the behavior.</p> | Teacher Conference with Student Seat Change Loss of Privileges Parent/Guardian Contact Conference with Parent Team Teacher Supervision – supervised time outside of class in team classroom School Counselor/Guidance Referral | <p><u>Elementary:</u></p> <p><i>1st Offense: Parent Contact</i></p> <p><i>2nd Offense: In School Consequence</i></p> <p><i>3rd Offense: Up to 2 days of OSS</i></p> <p><u>Secondary (Middle and High School):</u></p> <p><i>1st Offense: Up to 1 day of ISS</i></p> <p><i>2nd Offense: Up to 2 days of ISS</i></p> <p><i>3rd Offense: Up to 3 days of OSS</i></p> |
| 115 UB: Indecent Exposure | <p>Major: This refers to the act of showing private parts (sexual organs) in public. This may also include sexual photos that are sent to other students (i.e. material distributed as identified by Gaggle that has indecent exposure through social media/email/texts or pictures).</p> | | Up to 10 days OSS, Possible Police Involvement, LTS, Alternative School Placement |

| Behavior Offense | Definition/Examples (Examples may not be inclusive of all possibilities.) | Classroom Consequences for Minor Instances (These are possible consequences identified and used by teacher discretion.) (Choose one or more of the following options.) | School-Wide Consequences for Major Instances (Office administered consequences by an administrator) |
|--|---|---|--|
| 116 UB: Possession of Vaping Device | This refers to when a student is found to possess a vapor product such as electronic cigarette, electronic cigar, electronic cigarillo, and electronic pipe. | | <p><i>1st Offense:</i> Confiscation of device & consultation with SRO; Up to In School Consequence to 2 days of ISS and completion of educational/prevention modules</p> <p><i>2nd Offense:</i> Up to 3 days of OSS</p> <p><i>3rd Offense:</i> Up to 10 days of OSS</p> |
| 117 UB: Use of Vaping Device | This refers to when a student is found to use a vapor product such as electronic cigarette, electronic cigar, electronic cigarillo, and electronic pipe | | <p><i>1st Offense:</i> Confiscation of device & consultation with SRO; Up to In School Consequence to 2 days of ISS and completion of educational/prevention modules</p> <p><i>2nd Offense:</i> Up to 3 days of OSS</p> <p><i>3rd Offense:</i> Up to 10 days of OSS</p> |
| 121 UB: Continuation of Disciplinary Action from Previous School Year | When a student discipline carries over from one school year into the next year, in second year use the behavior type "121: Continuation of Disciplinary Action from Previous School Year", when recording the disciplinary action that occurs during the second year. | | *See previous year disciplinary action. |
| ***See NEXT PAGE for Persistently Dangerous and Reportable Offenses.*** | | | |

The following offenses described below are required by law to report to police those crimes specified in 115C-288(g). These are coded with *** indicating that they are reportable offenses.

| Behavior Offense | Definition/Examples (Examples may not be inclusive of all possibilities.) | Classroom Consequences for Minor Instances (These are possible consequences identified and used by teacher discretion.) (Choose one or more of the following options) | School-Wide Consequences for Major Instances (Office administered consequences by an administrator) |
|---|---|--|--|
| <p>*** 001 PD: Assault resulting in a serious injury (01)</p> <p>See Board Policy 4331.</p> <p>See Board Policy 4335.</p> | <p><u>Major:</u> An intentional offer or attempt by force or violence to do injury to the person of another that causes reasonable apprehension of immediate bodily harm resulting in one of the following: (1) substantial risk of death, (2) serious permanent disfigurement, (3) a coma, (4) a permanent or protracted condition that causes extreme pain, (5) permanent or protracted loss or impairment of the function of any bodily member or organ, or (6) that results in prolonged hospitalization.</p> <p>(If an offender used a weapon in an assault resulting in serious injury, report both Assault Resulting in Serious Injury and Assault Involving Use of a Weapon.)</p> | | <p>0-10 days, Police Involvement, possible LTS and/or Alternative School Placement</p> |
| <p>***002 PD: Assault involving the use of a weapon (02)</p> <p>See Board Policy 4331.</p> <p>See Board Policy 4335</p> | <p><u>Major:</u> An intentional offer or attempt by force or violence to do injury to the person of another that causes reasonable apprehension of immediate bodily harm through the use of one of the following: (1) any gun, rifle, pistol, or other firearm, (2) BB gun, (3) stun gun, (4) air rifle, (5) air pistol, (6) bowie knife, (7) dirk, (8) dagger, (9) slingshot, (10) leaded cane, (11) switchblade knife, (12) blackjack, (13) metallic knuckles, (14) razors and razor blades, (15) fireworks, or (16) any sharp-pointed or edged instrument except (cont.) instructional supplies, unaltered nail files and clips and tools used solely for preparation of food, instruction, and maintenance. (If a firearm or other weapon is used in the commission of any offense, the type of weapon must be identified in the <i>Weapon Used/Possessed</i> column of the Date Collection Form.)</p> | | <p>10 days suspension, Police Involvement, possible LTS and/or Alternative School Placement</p> |
| <p>***003 RO: Assault on school personnel not resulting in a serious injury (03) See Board Policy 4331. See Board Policy 4335. (Continued on next page)</p> | <p><u>Major:</u> An intentional offer or attempt by force or violence to do injury to a school official, employee, or volunteer that causes reasonable apprehension of immediate bodily harm while the school official, employee, or volunteer is discharging or attempting to discharge his/her duties. The “duties” of a school official, employee, or volunteer include the following:</p> | | <p>0-10 days, Police Involvement, possible LTS and/or Alternative School Placement</p> |

| Behavior Offense | Definition/Examples (Examples may not be inclusive of all possibilities.) | Classroom Consequences for Minor Instances (These are possible consequences identified and used by teacher discretion.) (Choose one or more of the following options.) | School-Wide Consequences for Major Instances (Office administered consequences by an administrator) |
|---|---|--|---|
| <p>***003 RO: Assault on school personnel not resulting in a serious injury (03) (Continued)</p> <p>See Board Policy 4331.</p> <p>See Board Policy 4335.</p> | <p>(1) all activities on school property, (2) all activities during a school authorized event or the accompanying of students to or from that event, and (3) all activities relating to the operation of school transportation.</p> <p>An “employee” includes (1) one who is employed by a local board of education, (2) one who is employed by a charter school, (3) one who is employed by a nonpublic school that operates under Part 1 or Part 2 of Article 39 of Chapter 115C of the General Statutes, or (4) an independent contractor if the independent contractor or employee of the independent contractor carries out duties customarily performed by employees of the school.</p> <p>-A “volunteer” is one who volunteers his/her services or presence at any school activity and is under the supervision of an employee.</p> <p>-This offense includes assaults on school personnel that do not involve the use of a weapon and do not result in apparent serious injury.</p> | | |
| <p>***004 PD: Homicide (06)</p> <p>See Board Policy 4335.</p> | <p><u>Major</u>: A murder which is perpetrated by one of the following means: (1) nuclear, biological, or chemical weapon of mass destruction, (2) poison, (3) lying in wait, (4) imprisonment, (5) starving, (6) torture, (7) any other kind of willful, deliberate, and premeditated murder, (8) during the perpetration or attempted perpetration of an arson, rape, sex offense, robbery, kidnapping, burglary, or other felony committed or attempted with the use of a deadly weapon, (9) the unlawful distribution and ingestion by someone of opium or any other synthetic or natural salt, compound, derivative, or preparation of opium, cocaine, or methamphetamine resulting in death, or (10) all other types of murder.</p> | | <p>10 days suspension, Police Involvement, possible LTS and/or Alternative School Placement</p> |

| Behavior Offense | Definition/Examples (Examples may not be inclusive of all possibilities.) | Classroom Consequences for Minor Instances (These are possible consequences identified and used by teacher discretion.) (Choose one or more of the following options.) | School-Wide Consequences for Major Instances (Office administered consequences by an administrator) |
|---|--|---|--|
| <p>***005 RO: Possession of controlled substance in violation of law - cocaine (09) See Board Policy 4325. See Board Policy 4335.</p> | <p><u>Major:</u> Student has possession of a controlled substance including cocaine.</p> | | <p>10 days suspension, Police Involvement, possible LTS and/or Alternative School Placement</p> |
| <p>***006 RO: Possession of controlled substance in violation of law - marijuana (09) See Board Policy 4325. See Board Policy 4335.</p> | <p><u>Major:</u> Student has possession of a controlled substance including marijuana.</p> | | <p>0-10 days, Police Involvement, possible LTS and/or Alternative School Placement</p> |
| <p>***007 RO: Possession of controlled substance in violation of law - Ritalin (09) See Board Policy 4325. See Board Policy 4335.</p> | <p><u>Major:</u> Student has possession of a controlled substance including Ritalin.</p> | | <p>0-10 days, Police Involvement, possible LTS and/or Alternative School Placement</p> |

| Behavior Offense | Definition/Examples (Examples may not be inclusive of all possibilities.) | Classroom Consequences for Minor Instances (These are possible consequences identified and used by teacher discretion.) (Choose one or more of the following options.) | School-Wide Consequences for Major Instances (Office administered consequences by an administrator) |
|--|---|--|---|
| <p>***008 RO: Possession of a weapon (excluding firearm, explosive) (10)</p> <p>See Board Policy 4335.</p> | <p><u>Major:</u> It is unlawful for any person to possess or carry, whether openly or concealed, any of the following weapons on campus or other educational property: (1) any BB gun, (2) stun gun, (3) air rifle, (4) air pistol, (5) bowie knife, (6) dirk, (7) dagger, (8) slingshot, (9) leaded cane, (10) switchblade knife, (11) blackjack, (12) metallic knuckles, (13) razors and razor blades, (14) fireworks, martial arts weapon, or (16) any sharp-pointed or edged instrument, except instructional supplies, unaltered nail files, clips, and tools used solely for preparation of food, instruction, maintenance.</p> <p>-“Educational Property” refers to any school building or bus, school campus, grounds, recreational area, athletic field, or other property owned, used, or operated by any board of education or school board of trustees, or directors for the administration of any school.</p> <p>Persons authorized to carry weapons on school property are individuals carrying a concealed handgun with a permit as authorized by Chapter 14, Article 54B of the NC General Statutes as amended by Session Law 2013-369, and law enforcement officers, firefighters, and emergency service personnel when discharging their official duties.</p> | | <p>0-10 days, Police Involvement, possible LTS and/or Alternative School Placement</p> |
| <p>***009 RO: Possession firearm or powerful explosive (11)</p> <p>See Board Policy 4333.</p> <p>See Policy 4300(G)(8)(b).</p> <p>See Board Policy 4335.</p> | <p>Any person or persons who, having in possession or with the use or threatened use of any firearms or powerful explosive.</p> | | <p>Recommendation for a 365-day suspension is mandatory for this offense as indicated by law (Reference Federal Gun Free Schools Act; N.C. Gen. Stat. 115C-390.10).</p> |

| Behavior Offense | Definition/Examples (Examples may not be inclusive of all possibilities.) | Classroom Consequences for Minor Instances (These are possible consequences identified and used by teacher discretion.) (Choose one or more of the following options.) | School-Wide Consequences for Major Instances (Office administered consequences by an administrator) |
|---|---|---|--|
| <p>***010 PD: Robbery with a dangerous weapon (13)</p> <p>See Board Policy 4335.</p> | <p><u>Major:</u> Any person or persons who, having in possession or with the use or threatened use of any firearms or other dangerous weapon, implement or means, whereby the life of a person is endangered or threatened, unlawfully takes or attempts to take personal property from another or from any place of business, residence, or banking institution or any other place where there is a person or persons in attendance, at any time, either day or night, or who aids or abets any such person or persons in the commission of such crime.</p> | | <p>0-10 days, Police Involvement, possible LTS and/or Alternative School Placement</p> |
| <p>***012 PD: Rape (12)</p> <p>See Board Policy 4335.</p> <p>See Policy 1725/4035/723 6: Title IX Sexual Harassment and Prohibited Conduct and Reporting Process.</p> | <p><u>Major:</u> A person is guilty of rape if that person engages in vaginal intercourse with another person by force and against the will of the other person, or if the person being assaulted is mentally disabled, mentally incapacitated, or physically helpless and the person performing the act knows or should reasonably know that the other person is mentally disabled, mentally incapacitated, or physically helpless.</p> <p>- Statutory rape is vaginal intercourse committed on a child under the age of 16 by a person who is at least 12 years old and at least 4 years older than the victim, regardless of whether the victim consented.</p> | | <p>10 days suspension, Police Involvement, possible LTS and/or Alternative School Placement</p> |

| Behavior Offense | Definition/Examples (Examples may not be inclusive of all possibilities.) | Classroom Consequences for Minor Instances (These are possible consequences identified and used by teacher discretion.) (Choose one or more of the following options.) | School-Wide Consequences for Major Instances (Office administered consequences by an administrator) |
|---|---|---|--|
| <p>***013 PD: Sexual offense (16)</p> <p>See Board Policy 4335.</p> <p>See Policy 1725/4035/723 6: Title IX Sexual Harassment and Prohibited Conduct and Reporting Process.</p> | <p>Major: First-degree sexual offense: A person is guilty of a sexual offense in the first degree if the person engages in a sexual act with (1) a victim who is a child under the age of 13 years and the defendant is at least 12 years old and is at least four years older than the victim, or (2) with another person by force and against the will of the other person, and (a) employs or displays a dangerous or deadly weapon or an article which the person reasonably believes to be a dangerous or deadly weapon, (b) inflicts serious personal injury upon the victim or another person, or (c) the person commits the offense aided and abetted by one or more other persons.</p> <p>-Sexual offense with a child (adult offender): A person is guilty of sexual offense with a child if the person is at least 18 years of age and engages in a sexual act with a victim who is a child and under the age of 13 years.</p> <p>Second-degree sexual offense: A person is guilty of a sexual offense in the second degree if the person engages in a sexual act with another person (1) by force and against the will of the other person, or (2) who is mentally disabled, mentally incapacitated, or physically helpless, and the person performing the act knows or should reasonably know that the other person is mentally disabled, mentally incapacitated, or physically helpless.</p> <p>Statutory rape or sexual offense of person who is 13, 14, or 15 years old: A person is guilty if he/she engages in vaginal intercourse or a sexual act with another person who is 13, 14, or 15 years old and the person committing the act is at least six years older than the person, except when the person committing the act is lawfully married to the other person.</p> | | <p>10 days suspension, Police Involvement, possible LTS and/or Alternative School Placement</p> |

| Behavior Offense | Definition/Examples (Examples may not be inclusive of all possibilities.) | Classroom Consequences for Minor Instances (These are possible consequences identified and used by teacher discretion.) (Choose one or more of the following options) | School-Wide Consequences for Major Instances (Office administered consequences by an administrator) |
|--|---|---|---|
| 014 PD: Sexual assault not involving rape or sexual offense (15) See Board Policy 4335. | <p>Major: A person is guilty of sexual battery if he/she, for the purpose of sexual arousal, sexual gratification, or sexual abuse, engages in sexual contact with another person by force and against the will of the other person, or if the person being assaulted is mentally disabled, mentally incapacitated, or physically helpless and the person performing the act knows or should reasonably know that the other person is mentally disabled, mentally incapacitated, or physically helpless.</p> <p>NCGS 14-27.1 defines "sexual contact" as touching the sexual organ, anus, breast, groin or buttocks of any person or a person touching another person with their own sexual organ, anus, breast, groin, or buttocks.</p> <p>The difference between a sexual assault and a sexual offense is that the sexual assault involves forcible and intentional touching without penetration, and a sexual offense involves penetration of a sex organ or anus by any object, or touching another's mouth or anus by the male sex organ.</p> | | 10 days suspension, Police Involvement, possible LTS and/or Alternative School Placement |
| ***015 PD: Taking indecent liberties with a minor (17) See Board Policy 4335. | <p>Major: A person is guilty of taking indecent liberties with a child if, being 16 years of age or more and at least five years older than the child in question, he/she either: (1) willfully takes or attempts to take any immoral, improper, or indecent liberties with any child of either sex under the age of 16 years for the purpose of arousing or gratifying sexual desire, or (2) willfully commits or attempts to commit any lewd or lascivious act upon or with the body or any part or member of the body of any child of either sex under the age of 16 years.</p> <p>A "lewd and lascivious act" is defined as an act that is obscene, lustful, or indecent, or tending to deprave the morals with respect to sexual relations.</p> | | 0-10 days, Police Involvement, possible LTS and/or Alternative School Placement |

| Behavior Offense | Definition/Examples (Examples may not be inclusive of all possibilities.) | Classroom Consequences for Minor Instances (These are possible consequences identified and used by teacher discretion.) (Choose one or more of the following options) | School-Wide Consequences for Major Instances (Office administered consequences by an administrator) |
|--|---|---|---|
| <p>***016 PD: Kidnapping (07)</p> <p>See Board Policy 4335.</p> | <p><u>Major:</u> A person who unlawfully confines, restrains, or removes from one place to another, any other person 16 years of age or over without the consent of such person, or any other person under the age of 16 years old without the consent of a parent or legal guardian of such person, shall be guilty of kidnapping if such confinement, restraint, or removal is for the purposes of one of the following: (1) holding such other person for a ransom, as a hostage, or using such other person as a shield, (2) facilitating the commission of any felony or facilitating the flight of any person following the commission of a felony, (3) doing serious bodily harm to or terrorizing the person so confined, restrained, or removed by any other person, (4) holding such other person in involuntary servitude, (5) trafficking another person with the intent that the person be held in involuntary servitude or sexual servitude, or (6) subjecting or maintaining such other person for sexual servitude.</p> | | <p>10 days suspension, Police Involvement, Possible LTS and/or Alternative School Placement</p> |
| <p>***017 RO: Possession of controlled substance in violation of law - other (09)</p> <p>See Board Policy 4335.</p> | <p><u>Major:</u> It is unlawful for a person to possess or have in his/her immediate control any of the following: Marijuana, Heroin, LSD, Methamphetamine, Cocaine, or any other drug listed in Schedules I - VI of the North Carolina Controlled Substances Act. (G.S. §90-89 through 90-94.)</p> <p>The unauthorized possession of a prescription drug is included under this offense. The principal should confer with law enforcement personnel if there is doubt as to whether or not a certain drug is considered a controlled substance.</p> | | <p>0-10 days, Police Involvement, Possible LTS and/or Alternative School Placement</p> |
| <p>***018 RO: Unlawfully setting a fire (G.S. 14-277.1)</p> <p>See Board Policy 4330. See Board Policy 4335.</p> | <p><u>Major: Student plans and/or participates in malicious burning of property.</u></p> | | <p>10 days suspension, Police Involvement, possible LTS and/or Alternative School Placement</p> |

| Behavior Offense | Definition/Examples (Examples may not be inclusive of all possibilities.) | Classroom Consequences for Minor Instances (These are possible consequences identified and used by teacher discretion.) (Choose one or more of the following options) | School-Wide Consequences for Major Instances (Office administered consequences by an administrator) |
|---|---|---|--|
| <p>***019 RO: Communicating threats (G.S. 14-277.1)</p> <p>See Board Policy 4331.</p> <p>See Board Policy 4333.</p> <p>See Board Policy 4335.</p> | <p><u>Major:</u> Student is making threats with a plan of harm to another person.</p> | | <p>0-10 days, Police Involvement, possible LTS and/or Alternative School Placement</p> |
| <p>***020 RO: Alcohol Possession (G.S. 18B) (08)</p> <p>See Board Policy 4325.</p> <p>See Board Policy 4335.</p> | <p><u>Major:</u> Student is in possession of or is using alcohol.</p> | | <p>Elementary: 0-10 days of suspension, Police Involvement, Possible LTS and/or Alternative School Placement</p> <p>Middle/High: 5to 10 days of suspension, Police Involvement, Possible LTS and/or Alternative School Placement</p> |
| <p>***043 RO: Making Bomb Threats or Engaging in Bomb Hoaxes (04)</p> <p>See Board Policy 4331.</p> <p>See Board Policy 4333.</p> <p>See Board Policy 4335.</p> | <p><u>Major:</u> A person who, with intent to perpetrate a hoax, conceals, places, or displays in or at a public building any device, machine, instrument, or artifact, so as to cause any person reasonably to believe the same to be a bomb or other device capable of causing injury to persons or property. A “public building” encompasses all educational property, as defined in G.S. 14-269.2, including: (1) any school building or bus, and (2) school campus, grounds, recreational area, athletic field, or other property owned, used, or operated, by any board of education or school board of trustees or directors for the administration of any school. “Public buildings” also include: (1) hospitals, and (2) buildings that house only State, federal, or local government offices, or the offices of the State, federal, or local government located in a building that is not exclusively occupied by the State, federal, or local government. <i>This offense includes when a person communicates a bomb threat by any means.</i></p> | | <p>10 days, Police Involvement, possible LTS and/or Alternative School Placement</p> |

| Behavior Offense | Definition/Examples (Examples may not be inclusive of all possibilities.) | Classroom Consequences for Minor Instances (These are possible consequences identified and used by teacher discretion.) (Choose one or more of the following options) | School-Wide Consequences for Major Instances (Office administered consequences by an administrator) |
|---|---|---|--|
| ***048 RO: Use of alcoholic beverage (08) See Board Policy 4325. | <u>Major: Student using alcohol.</u> | | Elementary: 0-10 days of suspension, Police Involvement, Possible LTS and/or Alternative School Placement Middle/High: 5 to 10 days of suspension, Police/Involvement, Possible LTS and/or Alternative School Placement |
| ***049 RO: Use of controlled substance See Board Policy 4325. | <u>Major: Student using a controlled substance.</u> | | 0-10 days, Police Involvement, possible LTS and/or Alternative School Placement |
| ***050 RO: Use of Narcotics (09) See Board Policy 4325. See Board Policy 4335. | <u>Major: Student using a narcotic.</u> | | 0-10 days, Police Involvement, possible LTS and/or Alternative School Placement |
| ***053 RO: Burning of a school building (G.S. 14-60) (05) | <u>Major:</u> A person who wantonly and willfully set fire to, burns, causes to be burned, or aids, counsels, or procures the burning of any schoolhouse or building owned, leased, or used by any public school, private school, college or education institution. | | 0-10 days, Police Involvement, possible LTS and/or Alternative School Placement |
| ***054 RO: Sale Controlled Substance – Cocaine (G.S. 90-94) (09) See Board Policy 4325. See Board Policy 4335. | <u>Major: Student intends to sale and/or distribute – cocaine.</u> | | 0-10 days, Police Involvement, possible LTS and/or Alternative School Placement |

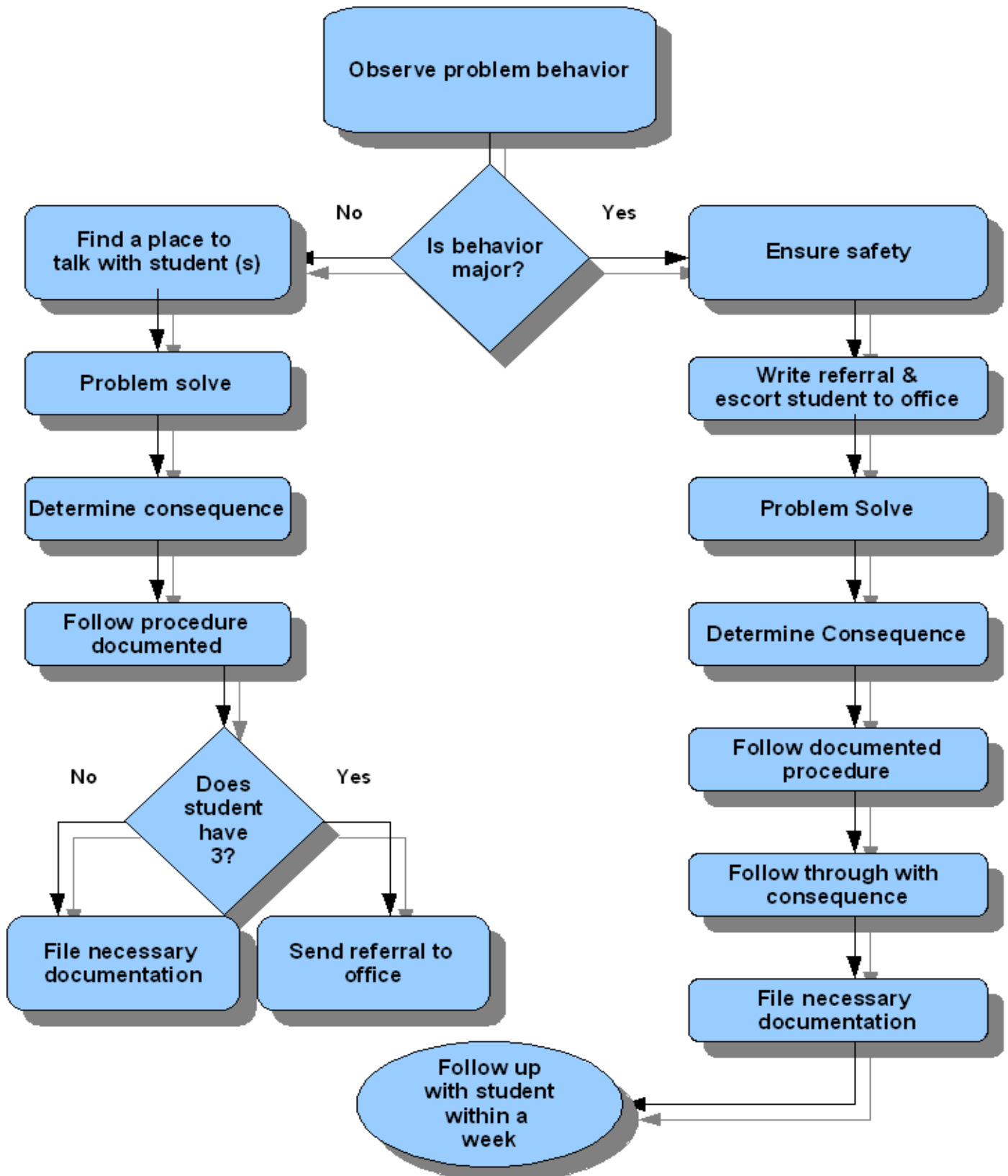
| Behavior Offense | Definition/Examples (Examples may not be inclusive of all possibilities.) | Classroom Consequences for Minor Instances (These are possible consequences identified and used by teacher discretion.) (Choose one or more of the following options) | School-Wide Consequences for Major Instances (Office administered consequences by an administrator) |
|---|--|---|---|
| <p>***055 RO: Sale Controlled Substance – Marijuana (G.S. 90-94) (09)</p> <p>See Board Policy 4325.</p> <p>See Board Policy 4335.</p> | <p><u>Major: Student intends to sale/or distribute - marijuana</u></p> | | <p>0-10 days, Police Involvement, possible LTS and/or Alternative School Placement</p> |
| <p>***056 RO: Sale Controlled Substance – Ritalin</p> <p>See Board Policy 4325.</p> <p>See Board Policy 4335.</p> | <p><u>Major: Student intends to sale/or distribute - Ritalin</u></p> | | <p>0-10 days, Police Involvement, possible LTS and/or Alternative School Placement</p> |
| <p>***057 RO: Sale Controlled Substance - Other (G.S. 90-94) (09)</p> <p>See Board Policy 4325.</p> <p>See Board Policy 4335.</p> | <p><u>Major: Student intends to sale and/or distribute – other.</u></p> | | <p>0-10 days, Police Involvement, possible LTS and/or Alternative School Placement</p> |
| <p>***087 RO: Possession of another person’s prescription drug (09)</p> <p>See Board Policy 4325.See Board Policy 4335.</p> | <p><u>Major: Student has possession of another person’s prescription drug.</u></p> | | <p>0-10 days, Police Involvement, possible LTS and/or Alternative School Placement</p> |

| Behavior Offense | Definition/Examples (Examples may not be inclusive of all possibilities.) | Classroom Consequences for Minor Instances (These are possible consequences identified and used by teacher discretion.) (Choose one or more of the following options) | School-Wide Consequences for Major Instances (Office administered consequences by an administrator) |
|--|--|---|---|
| <p>***088 RO: Distribution of a prescription drug (09)</p> <p>See Board Policy 4325.</p> <p>See Board Policy 4335.</p> | <p><u>Major: Student is distributing another person's prescription drug.</u></p> | | <p>0-10 days, Police Involvement, possible LTS and/or Alternative School Placement</p> |
| <p>***103 PD: Robbery with a firearm or explosive device (13)</p> <p>See Board Policy 4335.</p> | <p><u>Major: Student engages a firearm/explosive device or displays a firearm/explosive device to complete a robbery</u></p> | | <p>10 days, Police Involvement, possible LTS and/or Alternative School Placement</p> |
| <p>***104 PD: Physical attack with a firearm or explosive device (02)</p> <p>See Board Policy 4333.</p> <p>See Policy 4300(G)(8)(b).</p> <p>See Board Policy 4335.</p> | <p><u>Major: Student engages in a physical attack with a firearm and/or explosive device.</u></p> | | <p>10 days, Police Involvement, possible LTS and/or Alternative School Placement</p> |

| Behavior Offense | Definition/Examples (Examples may not be inclusive of all possibilities.) | Classroom Consequences for Minor Instances (These are possible consequences identified and used by teacher discretion.) (Choose one or more of the following options.) | School-Wide Consequences for Major Instances (Office administered consequences by an administrator) |
|--|---|--|---|
| <p>***118 RO: Possession of controlled substance in violation of law-opioid (09)</p> | <p>Possession of Controlled Substance in Violation of Law (G.S. §90-86 through 90-113.8): It is unlawful for a person to possess or have in his/her immediate control any of the following: Marijuana, Heroin, LSD, Methamphetamine, Cocaine, or any other drug, substance, or immediate precursor included in Schedules I - VI of the North Carolina Controlled Substances Act. (G.S. §90-89 through 90-94.) • The unauthorized possession of a prescription drug is included under this offense. • The principal should confer with law enforcement personnel if there is doubt as to whether or not a certain drug is considered a controlled substance.</p> <p>Opioids are a class of drugs that include the illegal drug heroin, synthetic opioids such as fentanyl, and pain relievers available legally by prescription, such as oxycodone (OxyContin®), hydrocodone (Vicodin®), codeine, morphine, and many others.</p> | | <p>10 days, Police Involvement, possible LTS and/or Alternative School Placement</p> |
| <p>***119 RO: Sale of controlled substance in violation of law-opioid (09)</p> | <p>Sale of Controlled Substance in Violation of Law (G.S. §90-86 through 90-113.8): It is unlawful for a person to possess or have in his/her immediate control any of the following: Marijuana, Heroin, LSD, Methamphetamine, Cocaine, or any other drug, substance, or immediate precursor included in Schedules I - VI of the North Carolina Controlled Substances Act. (G.S. §90-89 through 90-94.) • The unauthorized possession of a prescription drug is included under this offense. • The principal should confer with law enforcement personnel if there is doubt as to whether or not a certain drug is considered a controlled substance.</p> <p>Opioids are a class of drugs that include the illegal drug heroin, synthetic opioids such as fentanyl, and pain relievers available legally by prescription, such as oxycodone (OxyContin®), hydrocodone (Vicodin®), codeine, morphine, and many others.</p> | | <p>10 days, Police Involvement, possible LTS and/or Alternative School Placement</p> |

| Behavior Offense | Definition/Examples (Examples may not be inclusive of all possibilities.) | Classroom Consequences for Minor Instances (These are possible consequences identified and used by teacher discretion.) (Choose one or more of the following options.) | School-Wide Consequences for Major Instances (Office administered consequences by an administrator) |
|--|--|--|---|
| <p>***122 PD: Sexual Activity/Pretext Medical Treatment (15)</p> | <p>Sexual contact or penetration under pretext of medical treatment: Unless the conduct is covered under some other provision of law providing greater punishment, a person who undertakes medical treatment of a patient is guilty if the person does any of the following in the course of that medical treatment: • Represents to the patient that sexual contact between the person and the patient is necessary or will be beneficial to the patient's health and induces the patient to engage in sexual contact with the person by means of the representation. • Represents to the patient that sexual penetration between the person and the patient is necessary or will be beneficial to the patient's health and induces the patient to engage in sexual penetration with the person by means of the representation. • Engages in sexual contact with the patient while the patient is incapacitated. • Engages in sexual penetration with the patient while the patient is incapacitated. • Sexual contact is defined as "the intentional touching of a person's intimate parts or the intentional touching of the clothing covering the immediate area of the person's intimate parts, if that intentional touching can reasonably be construed as being for the purpose of sexual arousal or gratification, done for a sexual purpose, or done in a sexual manner." • Sexual penetration is defined as "sexual intercourse, cunnilingus, fellatio, anal intercourse, or any other intrusion, however slight, of any part of a person's body or of any object into the genital or anal openings of another person's body, regardless of whether semen is emitted, if that intrusion can reasonably be construed as being for the purpose of sexual arousal or gratification, done for a sexual purpose, or done in a sexual manner."</p> | | <p>10 days, Police Involvement, possible LTS and/or Alternative School Placement</p> |

Office Referral Flow Chart



Disciplinary Considerations for Early Childhood

RCS Preschool and RCS Head Start

The behavior and consequence coding recommendations are listed through the Department of Public Instruction for preschool students. Behavior at this age is a form of communication and it is important to remain objective and grounded in developmentally normative expectations. In Rockingham County Schools we expect a proactive and preventive response to preschool behaviors that require interventions rather than punitive approaches. RCS asks administrators to consider the intent and learning opportunities related to the actual behavior.

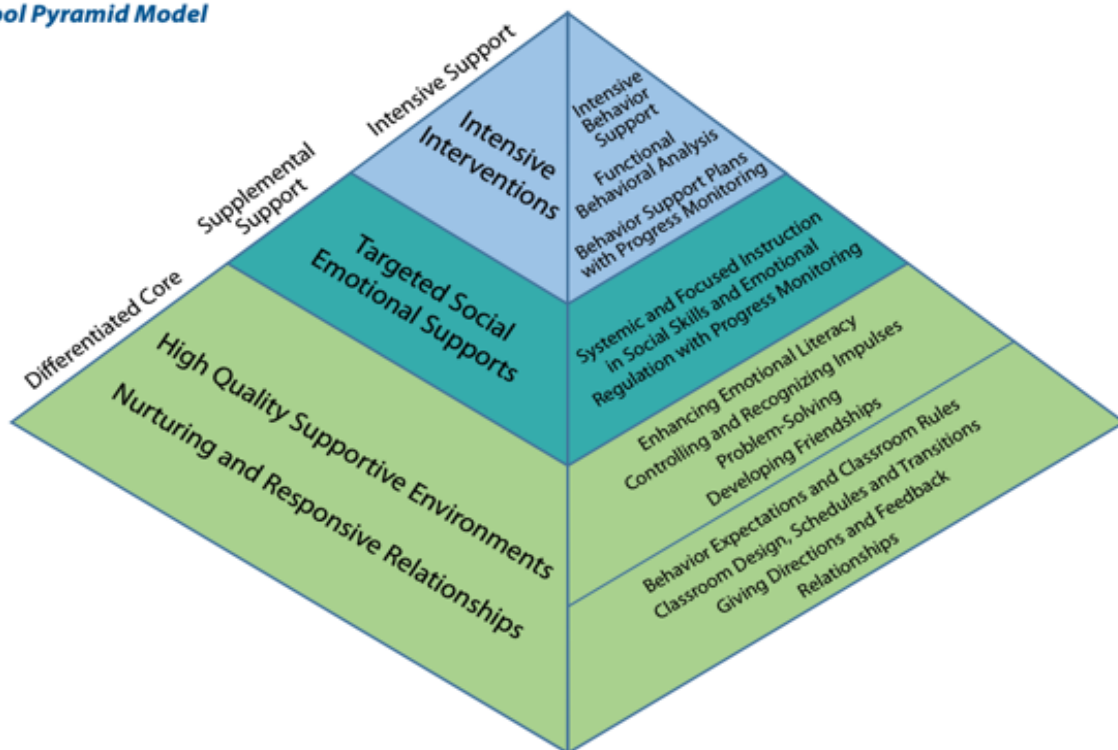
Managing Challenging Behaviors

Challenging behavior shall mean any repeated pattern of behavior, or perception of behavior, that interferes with, or is at risk of interfering with, optimal learning or engagement in pro-social interactions with peers and adults. It is behavior that interferes with children's learning, development, success at play or is harmful to the child, other children or adults, that puts a child at high risk for later social problems or school failure. Challenging behavior is thus defined on the basis of its effects. While some children's challenging behaviors are developmentally or culturally normative and effectively addressed by adult vigilance and the use of appropriate guidance procedures, other children need more targeted evidence-based practices to prevent and/or address challenging behaviors that are persistent or unresponsive to universal evidence-based approaches. The task of the early childhood educator is to understand the difference between the two, and how to best address each scenario. In the event a behavior was so significant that it posed an imminent risk of serious injury to the student's self or others and no other reasonable option is appropriate, the school administrator and/the PK Coordinator or HS Director would consult for further discussion as to possible interventions utilizing appropriate mental/behavioral health resources, while a temporary suspension is put in place.

Rockingham County Preschool programs have been a part of the Preschool Pyramid Model (PPM) since 2014. NC Preschool Pyramid Model (NC PPM) is funded through the 619 Preschool Disabilities grant to help improve child outcomes for Pre-K children with disabilities and to increase opportunities for instruction in the least restrictive environment (LRE). This framework (see Figure 1 below) supports teachers in providing quality instruction and classroom structure with a social emotional focus. All classroom PK teachers and PK teacher assistants receive professional development and access to online modules regarding the Early Learning Foundations Core/Tier I and Supplemental/Tier II and Intensive/Tier III instruction and support for social emotional learning and challenging behaviors. Teachers participating in reaching fidelity with the PPM project participate in Teacher Pyramid Observation Tool (TPOT) observations and fidelity checks and have coaching provided by a PPM trained coach. Valuable teacher resources for classroom practices and interventions can be found at <https://nceln.fpg.unc.edu/ncppm-resources-teachers>

*Please see Figure 1 for the NC Preschool Pyramid Model for Supporting Early Childhood Classroom Management and needs.

FIGURE 1
The NC Preschool Pyramid Model



Bus Behavior Expectations & Safety Requirements for All Students

Students are expected to observe the following rules for safety and courtesy on the bus. Parents are responsible for the supervision and safety of students from home until they board the bus, and from the bus stop to home.

1. At the Bus Stop

- Exercise safe pedestrian practices while on the way to the waiting area for the bus stop.
- Arrive at the waiting area for the bus stop ten (10) minutes before bus pickup.
- Wait in a quiet and orderly manner.
- Stay on your side of the roadway controlled by the bus warning lights.
- Be aware, cautious, and respectful of traffic.
- Wait in a safe place, clear of traffic, and away from where the bus stops.
- Respect private property.

2. When the Bus Arrives

- Remain at the waiting area until the bus comes to a complete stop.
- Check traffic from all directions, and then check again.
- Before walking from the wait area to the entrance of the bus be certain that the bus warning lights are activated and that all traffic in all directions has stopped.
- When safe to board, do so promptly.
- When boarding, be aware of and avoid the “danger zone,” the ten foot area immediately surrounding the stopped school bus. Be sure that you can see the bus driver’s eyes when in the vicinity of the school bus.
- If crossing a street controlled by bus warning lights, cross promptly after checking appropriate hand signals by bus driver and that traffic in all directions has stopped. Cross in front of the bus only.
- Upon entering the bus proceed directly to an available or assigned seat.

3. On The Bus

- Follow instructions of bus personnel.
- Be respectful of all people, including all bus personnel.
- Use language appropriate for the school setting.
- Keep the bus neat and clean.
- Refrain from eating or drinking on the bus.
- Talk quietly and politely.
- Sit at assigned seat, if one has been assigned by bus or school site personnel.
- Stay in seat; keep aisles and exits clear.
- Carry-on items are limited to those that can be held in your lap. No hazardous materials, nuisance items, or animals are permitted on the bus.
- Be respectful of the rights and safety of others.
- Refrain from extending head, arms, or objects out of bus windows.
- Follow cell phone use procedures as outlined by the bus driver
- Remember that school rules apply to the school bus. For example, use or possession of tobacco, alcohol, and other drugs is not allowed.

4. Exiting the Bus

- Remain seated until the bus comes to a complete stop.
- Exit the bus and the bus stop area in an orderly manner.
- Exit at your assigned bus stop.
- Check traffic from all directions, and then check again.
- Before exiting the bus, be certain that all traffic in all directions has stopped.
- When safe to exit, do so promptly.
- Be aware of and avoid the “danger zone,” the ten foot area immediately surrounding the stopped school bus. Be sure that you can see the bus driver’s eyes while in the vicinity of the school bus.
- If crossing a street controlled by bus warning lights, cross promptly after checking appropriate hand signals by bus driver and that traffic in all directions has stopped. Cross in front of the bus only.
- Exercise safe pedestrian practices while on the way from the bus stop to your home.

Bus/Transportation Consequences

| Consequences for Violation Related to Transportation for all students include, but are not limited to: | | | |
|---|--|---|--|
| 1st Offense | 2nd Offense | 3rd Offense | 4th Offense |
| Parent notification required Appropriate action or intervention Conference with driver, student, and principal Student conference Seat change on bus Code of Student Conduct implemented as appropriate | Parent notification required Conference with the student Up to three day suspension from bus | Parent notification required Conference with the student Up to five day suspension from bus | Parent notification required Conference with the student Up to ten day suspension from bus |
| <p>Fifth Offense – Automatic suspension from school bus for 9 weeks.*</p> <p>Sixth Offense – Automatic suspension from school bus for the semester or the remainder of the year (principal discretion).</p> <p>*Contact the office of the Exceptional Children’s Program</p> <p>*Appropriate Action Required</p> <p>*Major violations (such as fighting, assault, weapons, drugs, etc.) follow discipline code of conduct and are coded according to incident type.</p> | | | |

Behavior or activity jeopardizing the safe operation of the school bus or interfering with the welfare of other vehicle occupants is prohibited. The school bus operator will report promptly and in writing to appropriate administrative staff any conduct appearing to require disciplinary action. After administrative staff evaluation, appropriate disciplinary action will follow. A copy of the misconduct report will be returned to the school bus operator. Generally, misconduct on a school bus will not deny a student access to the classroom. School suspension, including expulsion, will occur only in special cases of misconduct that warrant this type of action. Most school buses are now equipped with video cameras. This tool monitors the passenger area of the bus. The objective is to provide an important additional tool to assist the driver in managing student conduct on school buses, an important safety consideration that benefits all.

Discipline Related Power School Codes

**This table helps identify related PowerSchool Codes.*

| Prohibited Behavior | Definition/Examples | Related PowerSchool Codes |
|---|---|--|
| Physical Aggression / Fighting | Includes pushing, hitting, slapping, punching, kicking, spitting, throwing objects, and similar physical contact, as well as actions or comments reasonably expected to result in a physical altercation | 021 UB (Affray) 022 UB (Disorderly Conduct) 024 UB (Fighting) 027 UB (Aggressive Behavior) |
| Assault See Board Policy 4331. | Causing or attempting to cause serious physical injury to another person | 044 UB (Assault on a Student) 045 UB (Assault – other) 071 UB (Assault on non-student w/o weapon & no injury) 072 UB (Assault on student w/o weapon and no injury) 090 UB (Violent assault not resulting in serious injury) 001 PD (Assault resulting in serious injury) 002 RO (Assault involving use of weapon) 003 RO (Assault on school personnel with no serious injury) |
| Harassment / Bullying See Board Policy 4329/7311. | Any pattern of gestures or written, electronic, or verbal communications, or any physical act or any threatening communication that: 1) places a student or school employee in actual and reasonable fear of harm to his or her person or damage to his or her property; or 2) creates or is certain to create a hostile environment by substantially interfering with or impairing a student's educational performance, opportunities, or benefits or by adversely altering the conditions of an employee's employment. See Policy 1710 for additional detail. | 025 UB (Harassment – Verbal) 038 UB (Harassment – Sexual) 052 UB (Bullying) 080 UB (Discrimination) 094 UB (Cyber-Bullying) 101 UB (Harassment – Racial) 102 UB (Harassment – Disability) 109 UB (Harassment – Sexual Orientation) 110 UB (Harassment – Religious Affiliation) |
| Integrity / Honor Code Violations See Board Policy 4310. | Includes plagiarism, cheating on tests or assignments, lying about academic work, fabricating or falsifying sources or information for an assignment, resubmitting previously used work without permission, or aiding another student in any honor code violation | 028 UB (Honor Code Violation) 035 UB (Falsification of Information) |
| Tobacco Products See Board Policy 4320. | Possession or use of tobacco products. Tobacco products includes all products derived from tobacco and any e-cigarettes, vape pens, e-hookahs, atomizers, etc. | 041 UB (Possession of Tobacco) 070 UB (Use of Tobacco) |

| | | |
|--|--|--|
| Gambling See Board Policy 4310. | Participating in a game of chance for money | 034 UB (Gambling) |
| Attendance See Board Policy 4400. | Skipping school or class, or repeated tardiness to school or class | 030 UB (Truancy) 064 UB (Excessive Tardiness) 074 UB (Cutting Class) 075 UB (Skipping School) 078 UB (Late to Class) |
| Inappropriate Language | Cursing, using sexually explicit language, or using vulgar, abusive, disrespectful, or demeaning language towards another person or toward a person's race, religion, sex, national origin, disability, or intellectual ability | 032 UB (Inappropriate Language /Disrespect) 061 UB (Disrespect of faculty/staff) |
| Hazing See Board Policy 3620. | Requiring submission to any physical injury or assault, or to any humiliating, embarrassing, or demeaning conduct or experience, as part of an initiation or a prerequisite to membership in any school group | 026 UB (Hazing) |
| Sexual Behavior | Engaging in behavior which is immoral, indecent, lewd, disreputable, or of any overly sexual nature in the school setting | 063 UB (Excessive Display of Affection) 068 UB (Mutual Sexual Contact Between Two Students) |
| Inappropriate Literature | Possession or distribution of literature or illustrations which significantly disrupt the educational process or which are obscene or unlawful | 040 UB (Inappropriate Items on School Property) |
| Disruptive Behavior (minor) See Board Policy 4315. | Low-intensity behaviors that are distracting to others or briefly interrupt instruction (ex. talking out of turn, making noises, making noises with materials) | 042 UB (Disruptive Behavior) |
| Disruptive Behavior (major) See Board Policy 4315. | Behavior causing a significant interruption in a class or activity, including, but not limited to: sustained loud talk, yelling, or screaming; extreme noise with materials in which one cannot hear instruction, etc. | 042 UB (Disruptive Behavior) |
| Disruptive Demonstration See Board Policy 3620. See Board Policy 4315. | Intentional verbal or physical acts which result or have the potential to result in blocking access to school functions or facilities or preventing the convening or continuation of school-related functions, including interference with operation of school buses | 029 UB (False Alarm) |
| Dress Code See Board Policy 4300-R-2. See Board Policy 4316. | Failure to adhere to the Dress Code Regulation (Board Policy 4300-R-2) or school-based codes consistent with Board Policy | 031 UB (Dress Code Violation) |

| | | |
|--|---|--|
| <p>Possession or Use of Drugs/Alcohol</p> <p>See Board Policy 4325.</p> | <p>Being in possession of, using, or being under the influence of alcohol, any controlled or prohibited substance (see list in Policy 4300(G)(5), or drug paraphernalia. Prescription drugs may only be possessed or used by the person to whom they were prescribed, in the manner prescribed, and in accordance with Board Policy 6125.</p> | <p>051 UB (Possession of a chemical or drug paraphernalia)</p> <p>086 UB (Possession of Student’s Own Prescription Drug)</p> <p>095 UB (Under the Influence of Alcohol)</p> <p>096 UB (Under the influence of controlled substances)</p> <p>005 RO (Possession – Cocaine)</p> <p>006 RO (Possession – Marijuana)</p> <p>020 RO (Alcohol Possession)</p> <p>048 RO (Use of Alcoholic Beverage)</p> <p>049 RO (Use of Controlled Substance)</p> <p>050 RO (Use of Narcotics)</p> <p>087 RO (Possession of another person’s prescription drugs)</p> |
| <p>Distribution, Manufacture, or Delivery of Drugs/Alcohol</p> <p>See Board Policy 4325.</p> <p>See Board Policy 4335.</p> | <p>Making, bringing, or distributing alcohol or any controlled substance. Distribution does not require payment or receipt of something in exchange for the alcohol or controlled substance. Intent to distribute may be inferred from evidence such as scales, packaging materials, or the amount of contraband.</p> | <p>054 RO (Sale – Cocaine)</p> <p>055 RO (Sale – Marijuana)</p> <p>056 RO (Sale – Ritalin)</p> <p>057 RO (Sale – Other)</p> <p>088 RO (Distribution – Prescription Drug)</p> |
| <p>Theft</p> <p>See Board Policy 4330.</p> | <p>Stealing or attempting to steal school or private property or knowingly possession stolen property; obtaining property via threat</p> | <p>023 UB (Extortion)</p> <p>036 UB (Theft)</p> <p>093 UB (Robbery without a weapon)</p> |
| <p>Damage to Property</p> <p>See Board Policy 4330.</p> | <p>Damaging or attempting to damage any school property or private property</p> | <p>039 UB (Property Damage)</p> |
| <p>Fire Setting / Arson</p> <p>See Board Policy 4330.</p> <p>See Board Policy 4335.</p> | <p>Starting a fire, or being in possession of incendiary material or devices</p> | <p>018 UB (Unlawfully Setting a Fire)</p> <p>039 UB (Property Damage)</p> <p>018 RO (Unlawfully Setting a Fire)</p> <p>053 RO (Burning of a School Building)</p> |
| <p>Trespass</p> <p>See Board Policy 4330.</p> | <p>Being on school grounds while suspended, on a campus other than the student’s assigned school without consent of that school’s administrators during the school day, or loitering at any school after the school day without supervision or specific need</p> | <p>No current UB code for this.</p> |
| <p>Threat / False Threat</p> | <p>Communication, whether verbal, written, or through any sign or act, of intent to harm another person. Includes any false</p> | <p>019 UB (Communicating Threats)</p> |

| | | |
|---|---|---|
| See Board Policy 4331. See Board Policy 4333. | threats of harm, even made in jest, that cause or a reasonable likely to cause fear or a disruption of school activities | 105 UB (Threat of physical attack with a firearm) 106 UB (Threat of physical attacked with a weapon) 107 UB (Threat of physical attack without a weapon) 019 RO (Communicating Threats) 043 RO (Making Bomb Threats/Hoaxes) |
| Weapons See Board Policy 4333. | Possessing, handling, using, or transmitting, whether concealed or open, any weapon or any instrument that reasonably looks like a weapon or could be used as a weapon. See list in Policy 4300(G)(8) | 008 RO (Possession – Weapon, excluding firearm or explosive) |
| Firearms/Destructive Devices See Board Policy 4333. See Policy 4300(G)(8)(b). | Possessing, handling, using, or transmitting, whether concealed or open, any firearm or destructive device. See Policy 4300(G)(8)(b). | 009 RO (Possession – Firearm or Powerful Explosive) 104 PD (Physical Attack with a firearm or explosive device) |
| Misuse of Technology See Board Policy 4318. | Unauthorized use of computers, cell phones, or other technology. See Board Policy 4312. | 091 UB (Misuse of School Technology) 060 UB (Cell phone use) |
| Gang Activity See Board Policy 4328. | See Board Policy 4328 for more details. | 079 UB (Gang Activity) |
| Search and Seizure Please see Board Policy 4342. | Failure to comply with a search or seizure authorized under Board policy | No UB code for this. |
| Aiding and Abetting | Assisting or encouraging others to violate the code of conduct | Other |
| Use of Unnamed Aircraft See Board Policy 4334/5035/7435. | Use of unnamed aircraft and/or drones on RCS property. | Other |

This handbook was written and revised by the members of the RCS Discipline Task Force:

Dr. Cindy A. Corcoran (Chair), Dr. Charles Perkins, Amy Wilson, Angela Martin, Trina McCoy, Jason Hyler, Dr. Pam Watkins, Erica Blackwell, Keith Barnett.

*Dr. Stephanie Ellis, Original author of draft guide; final revisions made by committee

Reviewed and updated 06/14/23